

Product datasheet for **AM06623SU-N**

CDK9 Mouse Monoclonal Antibody [Clone ID: 1B5A7]

Product data:

Product Type:	Primary Antibodies
Clone Name:	1B5A7
Applications:	ELISA, IHC, WB
Recommended Dilution:	Western Blot: 1/500 - 1/2000. Immunohistochemistry on paraffin sections 1/200 - 1/1000. ELISA: 1/10000.
Reactivity:	Human
Host:	Mouse
Isotype:	IgG1
Clonality:	Monoclonal
Immunogen:	Purified recombinant fragment of human CDK9 expressed in E. Coli.
Specificity:	This antibody reacts to CDK9.
Formulation:	State: Ascites State: Ascitic fluid containing 0.03% sodium azide.
Conjugation:	Unconjugated
Storage:	Store the antibody undiluted at 2-8°C for one month or (in aliquots) at -20°C for longer. Avoid repeated freezing and thawing.
Stability:	Shelf life: one year from despatch.
Predicted Protein Size:	43 kDa
Gene Name:	cyclin-dependent kinase 9
Database Link:	Entrez Gene 1025 Human P50750



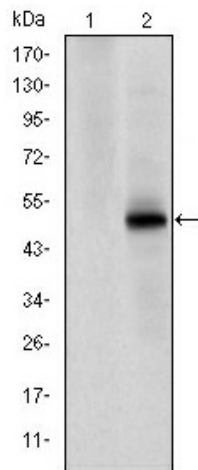
[View online »](#)

Background:

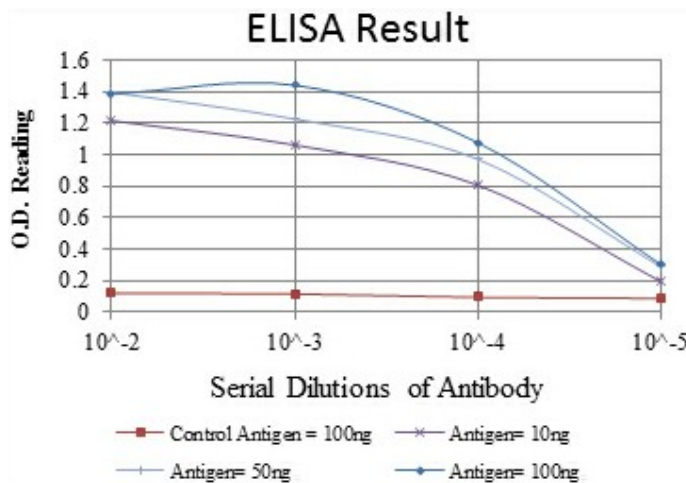
The protein encoded by this gene is a member of the cyclin-dependent protein kinase (CDK) family. CDK family members are highly similar to the gene products of *S. cerevisiae* cdc28, and *S. pombe* cdc2, and known as important cell cycle regulators. This kinase was found to be a component of the multiprotein complex TAK/P-TEFb, which is an elongation factor for RNA polymerase II-directed transcription and functions by phosphorylating the C-terminal domain of the largest subunit of RNA polymerase II. This protein forms a complex with and is regulated by its regulatory subunit cyclin T or cyclin K. HIV-1 Tat protein was found to interact with this protein and cyclin T, which suggested a possible involvement of this protein in AIDS. (provided by RefSeq) Tissue specificity: Ubiquitous.

Synonyms:

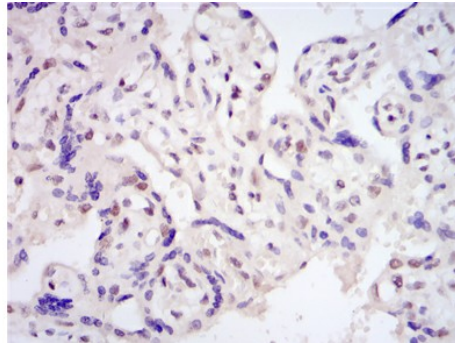
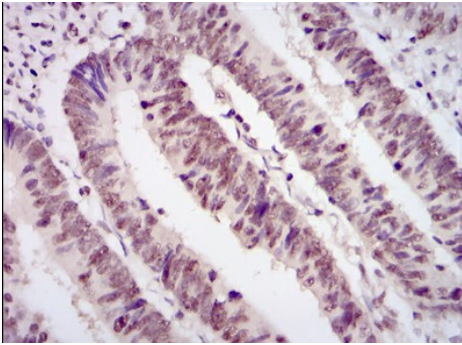
PITALRE, CDC2L4

Product images:


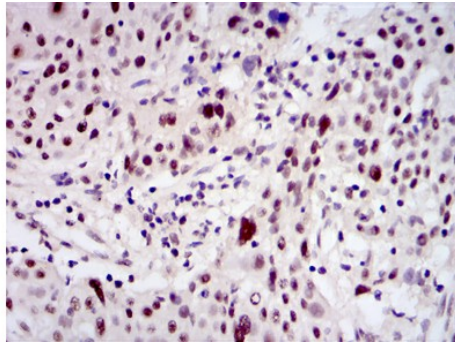
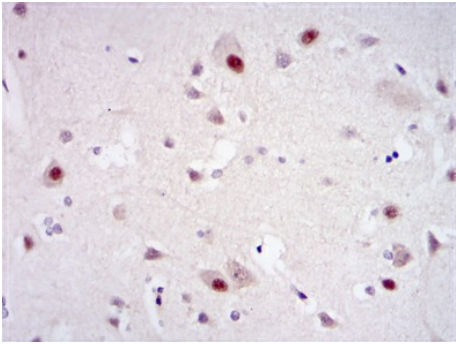
Western blot analysis using CDK9 mAb against HEK293 (1) and CDK9 (AA: 178-369)-hlgGfc transfected HEK293 (2) cell lysate.



Red: Control Antigen (100ng); Purple: Antigen (10ng); Green: Antigen (50ng); Blue: Antigen (100ng);



Immunohistochemical analysis of paraffin-embedded rectum cancer tissues (left) and placenta tissues (right) using CDK9 mouse mAb with DAB staining.



Immunohistochemical analysis of paraffin-embedded brain tissues (left) and esophageal cancer tissues (right) using CDK9 mouse mAb with DAB staining.