

Product datasheet for **AM06622SU-N**

CDK5 Mouse Monoclonal Antibody [Clone ID: 4E4]

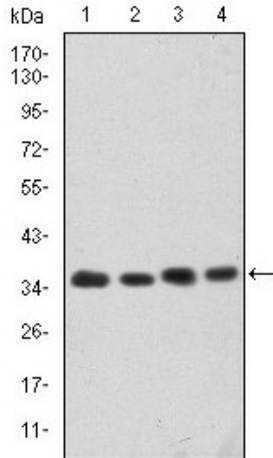
Product data:

Product Type:	Primary Antibodies
Clone Name:	4E4
Applications:	ELISA, FC, IF, IHC, WB
Recommended Dilution:	Western Blot: 1/500 - 1/2000. Immunohistochemistry on paraffin sections: 1/200 - 1/1000. Immunofluorescence: 1/200 - 1/1000. Flow cytometry: 1/200 - 1/400. ELISA: 1/10000.
Reactivity:	Human, Monkey, Rat
Host:	Mouse
Isotype:	IgG1
Clonality:	Monoclonal
Immunogen:	Purified recombinant fragment of human CDK5 expressed in E. Coli.
Specificity:	This antibody reacts to CDK5.
Formulation:	State: Ascites State: Ascitic fluid containing 0.03% sodium azide.
Conjugation:	Unconjugated
Storage:	Store the antibody undiluted at 2-8°C for one month or (in aliquots) at -20°C for longer. Avoid repeated freezing and thawing.
Stability:	Shelf life: one year from despatch.
Predicted Protein Size:	35 kDa
Gene Name:	cyclin-dependent kinase 5
Database Link:	Entrez Gene 1020 Human Q00535
Background:	Function: Probably involved in the control of the cell cycle. Interacts with D1 and D3-type G1 cyclins. Can phosphorylate histone H1, tau, MAP2 and NF-H and NF-M. Also interacts with p35 which activates the kinase.
Synonyms:	PSSALRE, TPKII catalytic subunit

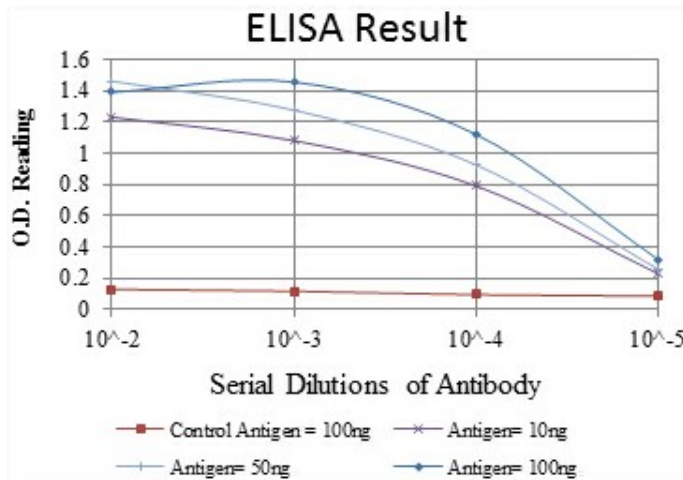


[View online »](#)

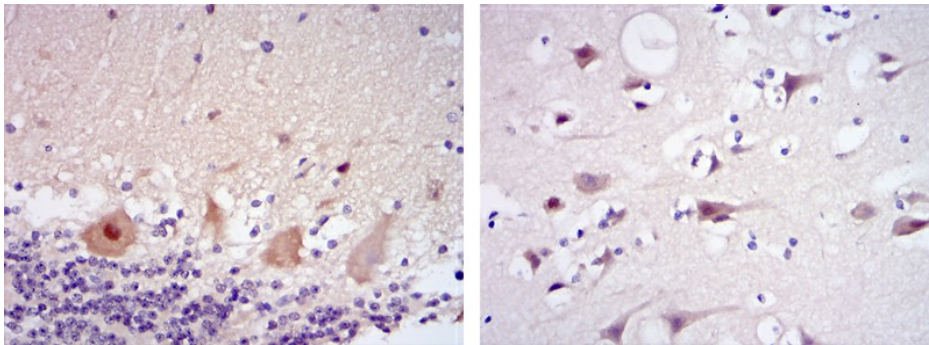
Product images:



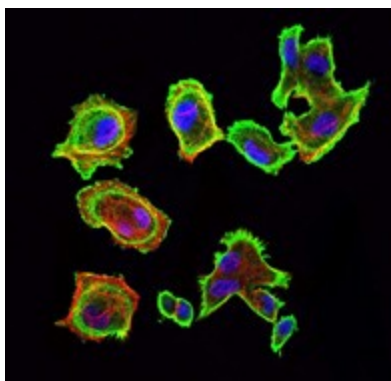
Western blot analysis using CDK5 mouse mAb against HeLa (1), K562 (2), PC-12 (3) and Cos7 (4) cell lysate.



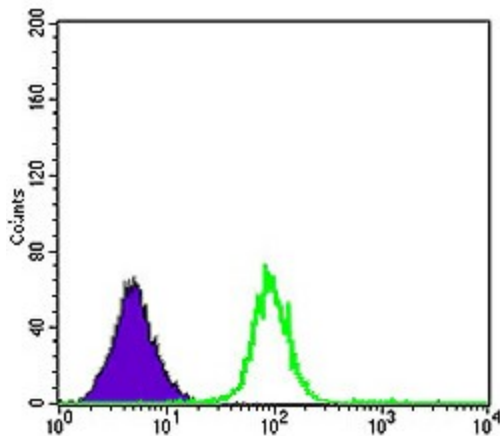
Red: Control Antigen (100ng); Purple: Antigen (10ng); Green: Antigen (50ng); Blue: Antigen (100ng)



Immunohistochemical analysis of paraffin-embedded cerebellum tissues (left) and brain tissues (right) using CDK5 mouse mAb with DAB staining.



Immunofluorescence analysis of GC7901 cells using CDK5 mouse mAb (green). Blue: DRAQ5 fluorescent DNA dye. Red: Actin filaments have been labeled with Alexa Fluor-555 phalloidin.



Flow cytometric analysis of K562 cells using CDK5 mouse mAb (green) and negative control (purple).