

## Product datasheet for **AM06621SU-N**

### EPHA10 Mouse Monoclonal Antibody [Clone ID: 2E8]

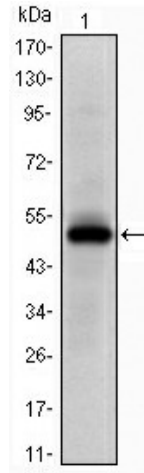
#### Product data:

Product Type:	Primary Antibodies
Clone Name:	2E8
Applications:	ELISA, WB
Recommended Dilution:	Western Blotting: 1/500 - 1/2000. ELISA: Propose dilution 1/10000. Not yet tested in other applications. Determining optimal working dilutions by titration test.
Reactivity:	Human
Host:	Mouse
Isotype:	IgG2a
Clonality:	Monoclonal
Immunogen:	Purified recombinant fragment of human Epha10 expressed in E. Coli.
Specificity:	This antibody reacts to Epha10.
Formulation:	State: Ascites State: Ascitic fluid containing 0.03% sodium azide.
Conjugation:	Unconjugated
Storage:	Store the antibody undiluted at 2-8°C for one month or (in aliquots) at -20°C for longer. Avoid repeated freezing and thawing.
Stability:	Shelf life: one year from despatch.
Predicted Protein Size:	110 kDa
Gene Name:	EPH receptor A10
Database Link:	<a href="#">Entrez Gene 284656 Human Q5JZY3</a>
Background:	Ephrin receptors, the largest subfamily of receptor tyrosine kinases (RTKs), and their ephrin ligands are important mediators of cell-cell communication regulating cell attachment, shape, and mobility in neuronal and epithelial cells (Aasheim et al., 2005 (PubMed 15777695)). Tissue specificity: Mainly expressed in testis.
Synonyms:	Ephrin type-A receptor 10

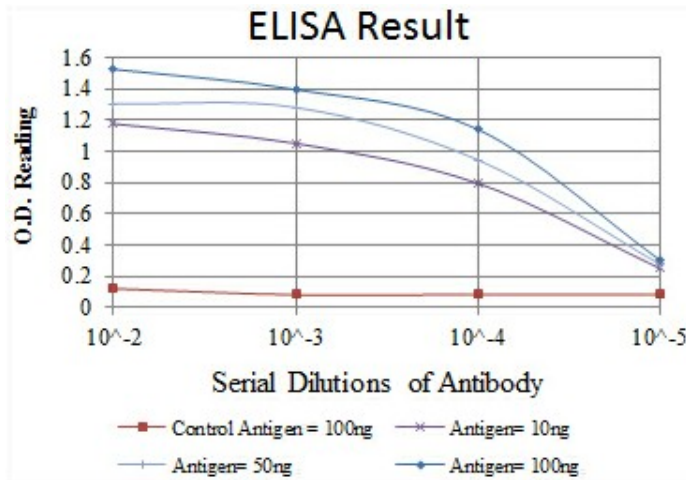


[View online »](#)

Product images:



Western blot analysis using Epha10 mAb against human Epha10 (AA: 34-295) recombinant protein. (Expected MW is 50 kDa)



Red: Control Antigen (100ng); Purple: Antigen (10ng); Green: Antigen (50ng); Blue: Antigen (100ng)