

## Product datasheet for **AM06620SU-N**

### **FCSK Mouse Monoclonal Antibody [Clone ID: 6E2]**

#### **Product data:**

Product Type:	Primary Antibodies
Clone Name:	6E2
Applications:	ELISA, FC, WB
Recommended Dilution:	<b>Western Blot:</b> 1/500 - 1/2000. <b>Flow cytometry:</b> 1/200 - 1/400. <b>ELISA:</b> 1/10000.
Reactivity:	Human, Monkey, Mouse, Rat
Host:	Mouse
Isotype:	IgG1
Clonality:	Monoclonal
Immunogen:	Purified recombinant fragment of human FUK expressed in E. Coli.
Specificity:	This antibody reacts to FUK.
Formulation:	State: Ascites State: Ascitic fluid containing 0.03% sodium azide.
Conjugation:	Unconjugated
Storage:	Store the antibody undiluted at 2-8°C for one month or (in aliquots) at -20°C for longer. Avoid repeated freezing and thawing.
Stability:	Shelf life: one year from despatch.
Predicted Protein Size:	117 kDa
Gene Name:	fucokinase
Database Link:	<a href="#">Entrez Gene 197258 Human Q8N0W3</a>



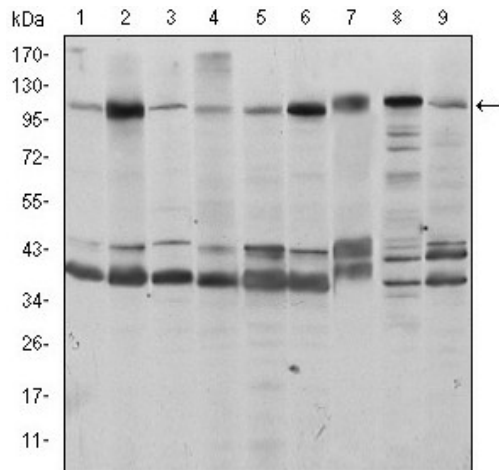
[View online »](#)

**Background:**

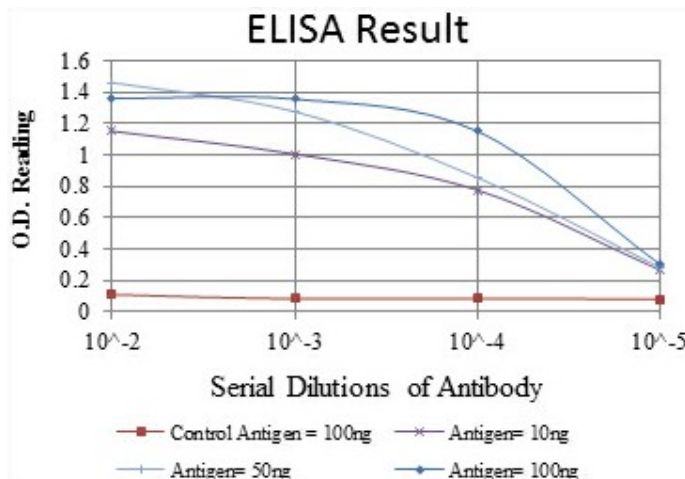
The protein encoded by this gene belongs to the GHMP (galacto-, homoserine, mevalonate and phosphomevalonate) kinase family and catalyzes the phosphorylation of L-fucose to form beta-L-fucose 1-phosphate. This enzyme catalyzes the first step in the utilization of free L-fucose in glycoprotein and glycolipid synthesis. L-fucose may be important in mediating a number of cell-cell interactions such as blood group antigen recognition, inflammation, and metastasis. While several transcript variants may exist for this gene, the full-length nature of only one has been described to date. (provided by RefSeq)

**Synonyms:**

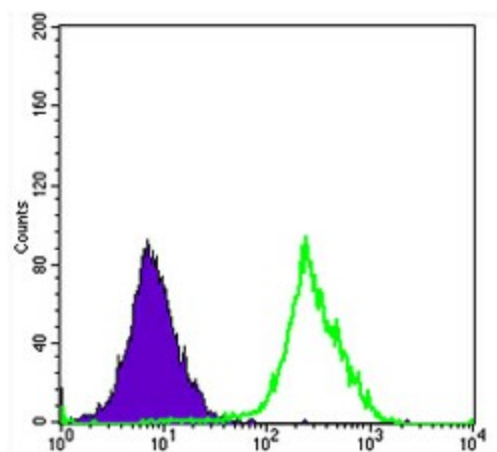
L-fucose kinase, FUK

**Product images:**


Western blot analysis using FUK mouse mAb against HeLa (1), HepG2 (2), Jurkat (3), A431 (4), HEK293 (5), MCF-7 (6), PC-12 (7), Cos7 (8), and NIH/3T3 (9) cell lysate.



Red: Control Antigen (100ng); Purple: Antigen (10ng); Green: Antigen (50ng); Blue: Antigen (100ng);



Flow cytometric analysis of HeLa cells using FUK mouse mAb (green) and negative control (purple).