

Product datasheet for **AM06619SU-N**

PODXL Mouse Monoclonal Antibody [Clone ID: 5F5]

Product data:

Product Type:	Primary Antibodies
Clone Name:	5F5
Applications:	ELISA, FC, IHC, WB
Recommended Dilution:	Western Blot: 1/500-1/2000. Immunohistochemistry on Paraffin Sections: 1/200-1/1000. Flow Cytometry: 1/200-1/400. ELISA: 1/10000.
Reactivity:	Human
Host:	Mouse
Isotype:	IgG1
Clonality:	Monoclonal
Immunogen:	Purified recombinant fragment of Human PODXL expressed in E. Coli.
Specificity:	This antibody reacts to PODXL.
Formulation:	State: Ascites State: Ascitic fluid containing 0.03% Sodium Azide
Conjugation:	Unconjugated
Storage:	Store undiluted at 2-8°C for one month or (in aliquots) at -20°C for longer. Avoid repeated freezing and thawing.
Stability:	Shelf life: one year from despatch.
Predicted Protein Size:	49 kDa
Gene Name:	podocalyxin like
Database Link:	Entrez Gene 5420 Human O00592



[View online »](#)

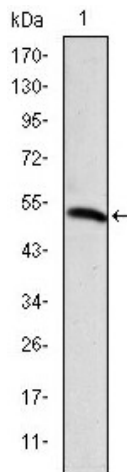
Background:

This gene encodes a member of the sialomucin protein family. The encoded protein was originally identified as an important component of glomerular podocytes. Podocytes are highly differentiated epithelial cells with interdigitating foot processes covering the outer aspect of the glomerular basement membrane. Other biological activities of the encoded protein include: binding in a membrane protein complex with Na⁺/H⁺ exchanger regulatory factor to intracellular cytoskeletal elements, playing a role in hematopoietic cell differentiation, and being expressed in vascular endothelium cells and binding to L-selectin. (provided by RefSeq) Tissue specificity: Glomerular epithelium cell (podocyte)

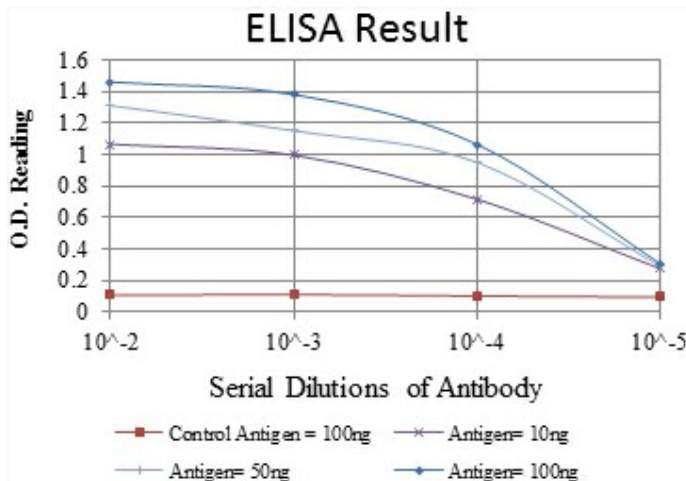
Synonyms:

Podocalyxin-like protein 1, PCLP, PCLP1, PCLP-1, GCTM-2 antigen, Hematopoietic Stem Cell Marker

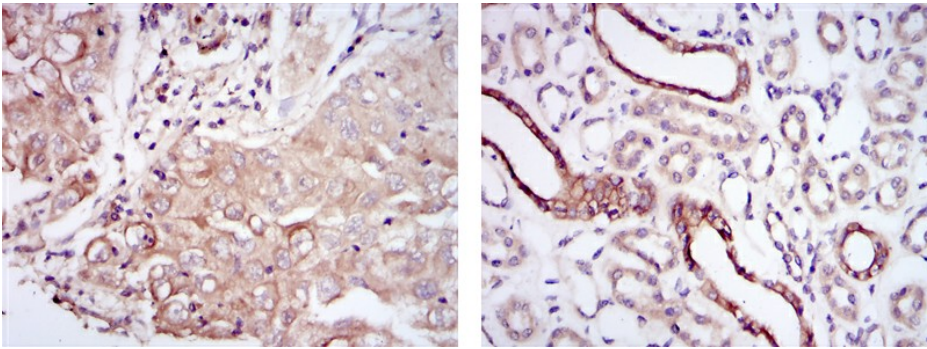
Product images:



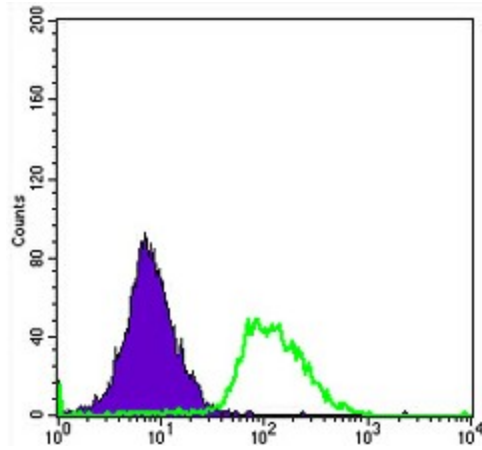
Western blot analysis using PODXL mAb against human PODXL (AA: 109-324) recombinant protein. (Expected MW is 47.3 kDa)



Red: Control Antigen (100ng); Purple: Antigen (10ng); Green: Antigen (50ng); Blue: Antigen (100ng);



Immunohistochemical analysis of paraffin-embedded lung cancer tissues (left) and kidney tissues (right) using PODXL mouse mAb with DAB staining.



Flow cytometric analysis of Hela cells using PODXL mouse mAb (green) and negative control (purple).