

Product datasheet for **AM06613SU-N**

CREB1 Mouse Monoclonal Antibody [Clone ID: 5G3]

Product data:

Product Type:	Primary Antibodies
Clone Name:	5G3
Applications:	ELISA, IF, IHC, WB
Recommended Dilution:	Western Blot: 1/500 - 1/2000. Immunohistochemistry on paraffin sections: 1/200 - 1/1000. Immunofluorescence: 1/200 - 1/1000. ELISA: 1/10000.
Reactivity:	Human, Monkey, Mouse, Rat
Host:	Mouse
Isotype:	IgG1
Clonality:	Monoclonal
Immunogen:	Purified recombinant fragment of human CREB1 expressed in E. Coli.
Specificity:	This antibody reacts to CREB1.
Formulation:	State: Ascites State: Ascitic fluid containing 0.03% sodium azide.
Conjugation:	Unconjugated
Storage:	Store the antibody undiluted at 2-8°C for one month or (in aliquots) at -20°C for longer. Avoid repeated freezing and thawing.
Stability:	Shelf life: one year from despatch.
Predicted Protein Size:	43 kDa
Gene Name:	cAMP responsive element binding protein 1
Database Link:	Entrez Gene 1385 Human P16220



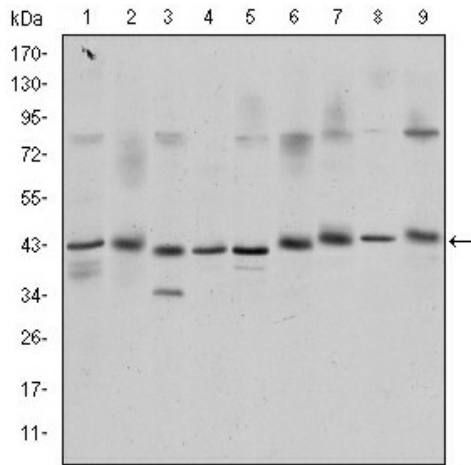
[View online »](#)

Background:

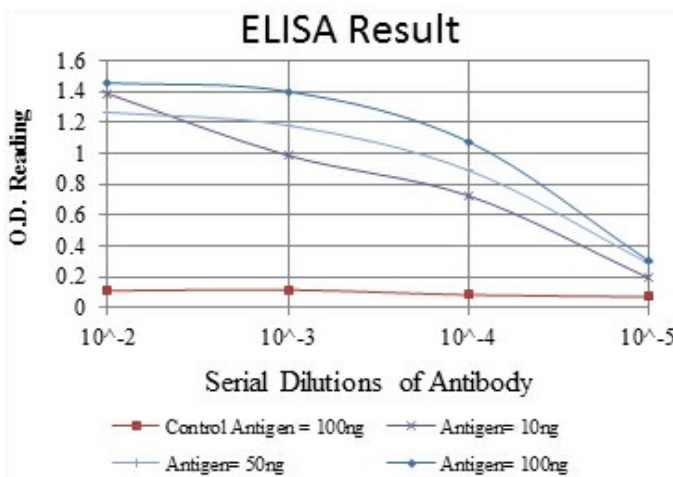
This gene encodes a transcription factor that is a member of the leucine zipper family of DNA binding proteins. This protein binds as a homodimer to the cAMP-responsive element, an octameric palindrome. The protein is phosphorylated by several protein kinases, and induces transcription of genes in response to hormonal stimulation of the cAMP pathway. Alternate splicing of this gene results in two transcript variants encoding different isoforms. (provided by RefSeq)

Synonyms:

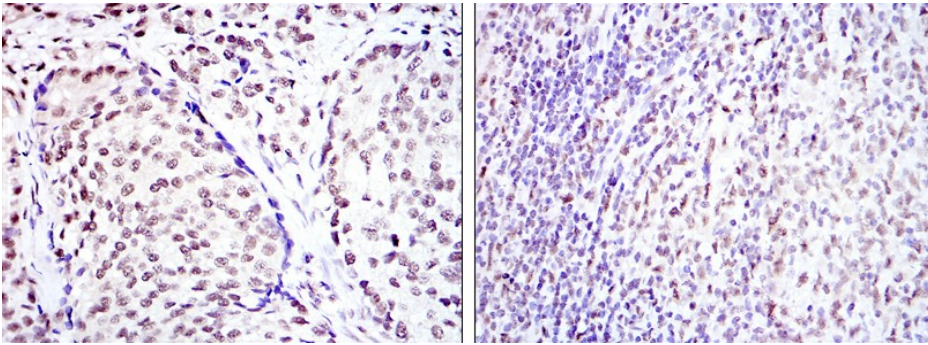
CREB-1

Product images:


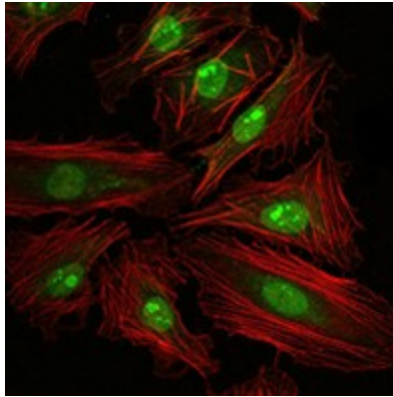
Western blot analysis using CREB1 mouse mAb against K562 (1), Jurkat (2), L1210 (3), HEK293 (4), A431 (5), Hela (6), Cos7 (7), PC-12 (8), and NIH/3T3 (9) cell lysate.



Red: Control Antigen (100ng); Purple: Antigen (10ng); Green: Antigen (50ng); Blue: Antigen (100ng);



Immunohistochemical analysis of paraffin-embedded prostate cancer tissues (left) and submaxillary tumor tissues (right) using CREB1 mouse mAb with DAB staining.



Immunofluorescence analysis of HeLa cells using CREB1 mouse mAb (green). Red: Actin filaments have been labeled with Alexa Fluor-555 phalloidin.