

Product datasheet for **AM06610SU-N**

MSX1 Mouse Monoclonal Antibody [Clone ID: 5D11]

Product data:

Product Type:	Primary Antibodies
Clone Name:	5D11
Applications:	ELISA, WB
Recommended Dilution:	ELISA: 1/10000. Western Blot: 1/500 - 1/2000.
Reactivity:	Human
Host:	Mouse
Isotype:	IgG1
Clonality:	Monoclonal
Immunogen:	Purified recombinant fragment of Human MSX1 expressed in E. Coli.
Specificity:	Recognizes MSX1
Formulation:	State: Ascites State: Ascitic fluid containing 0.03% Sodium Azide.
Conjugation:	Unconjugated
Storage:	Store the antibody undiluted at 2-8°C for one month or (in aliquots) at -20°C for longer. Avoid repeated freezing and thawing.
Stability:	Shelf life: one year from despatch.
Predicted Protein Size:	31 kDa
Gene Name:	msh homeobox 1
Database Link:	Entrez Gene 4487 Human P28360



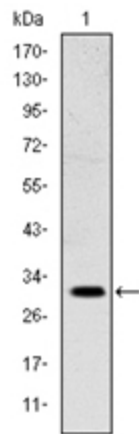
[View online »](#)

Background:

Drosophila, muscle segment (msh) homolog 1, homeo domain encoding gene, inhibiting MYOD1 expression, highly expressed in dental mesenchyme during critical bud stage, involved in epithelial-mesenchymal signaling in many organs, and in the pathogenesis of cleft lip and palate, interacting with MSX2 in mouse limb bud patterning. This gene encodes a member of the muscle segment homeobox gene family. The encoded protein functions as a transcriptional repressor during embryogenesis through interactions with components of the core transcription complex and other homeoproteins. It may also have roles in limb-pattern formation, craniofacial development, particularly odontogenesis, and tumor growth inhibition. Tissue specificity: Expressed in the developing nail bed mesenchyme.

Synonyms:

MSX-1, HOX7, Hox-7

Product images:


Western blot analysis using MSX1 antibody Cat.- No AM06610SU-N against NTERA-2 cell lysate.

