

## Product datasheet for **AM06608SU-N**

### HIF-1 alpha (HIF1A) Mouse Monoclonal Antibody [Clone ID: 1A3]

#### Product data:

Product Type:	Primary Antibodies
Clone Name:	1A3
Applications:	ELISA, IF, IHC, WB
Recommended Dilution:	<b>ELISA:</b> 1/10000. <b>Western Blot:</b> 1/500 - 1/2000. Immunofluorescence: 1/200 - 1/1000. <b>Immunohistochemistry on Paraffin Sections:</b> 1/200 - 1/1000.
Reactivity:	Human, Monkey, Mouse
Host:	Mouse
Isotype:	IgG1
Clonality:	Monoclonal
Immunogen:	Purified recombinant fragment of Human HIF1A expressed in E. Coli.
Specificity:	Recognizes HIF1 alpha (HIF1A)
Formulation:	State: Ascites State: Ascitic fluid containing 0.03% Sodium Azide.
Conjugation:	Unconjugated
Storage:	Store the antibody undiluted at 2-8°C for one month or (in aliquots) at -20°C for longer. Avoid repeated freezing and thawing.
Stability:	Shelf life: one year from despatch.
Predicted Protein Size:	120 kDa
Gene Name:	hypoxia inducible factor 1 alpha subunit
Database Link:	<a href="#">Entrez Gene 3091 Human Q16665</a>



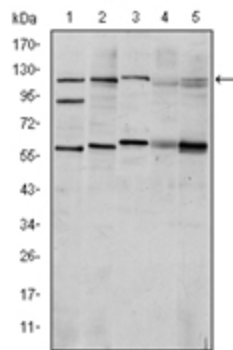
[View online »](#)

**Background:**

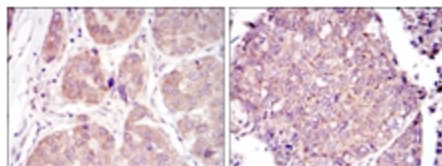
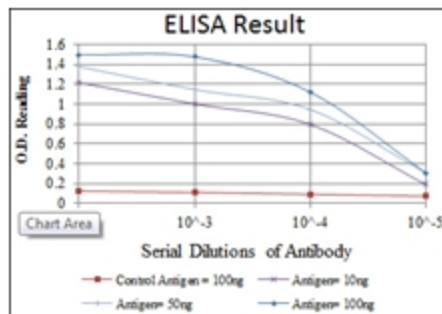
Hypoxia-inducible factor-1 (HIF1) is a transcription factor found in mammalian cells cultured under reduced oxygen tension that plays an essential role in cellular and systemic homeostatic responses to hypoxia. HIF1 is a heterodimer composed of an alpha subunit and a beta subunit. The beta subunit has been identified as the aryl hydrocarbon receptor nuclear translocator (ARNT). This gene encodes the alpha subunit of HIF-1. Overexpression of a natural antisense transcript (aHIF) of this gene has been shown to be associated with nonpapillary renal carcinomas. Two alternative transcripts encoding different isoforms have been identified. (provided by RefSeq) Tissue specificity: Expressed in most tissues with highest levels in kidney and heart. Overexpressed in the majority of common human cancers and their metastases, due to the presence of intratumoral hypoxia and as a result of mutations in genes encoding oncoproteins and tumor suppressors.

**Synonyms:**

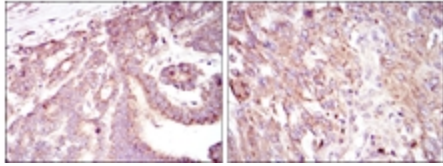
HIF-1 alpha, Hypoxia-inducible factor 1 alpha, ARNT-interacting protein, Member of PAS protein 1, Basic-helix-loop-helix-PAS protein MOP1, BHLHE78

**Product images:**


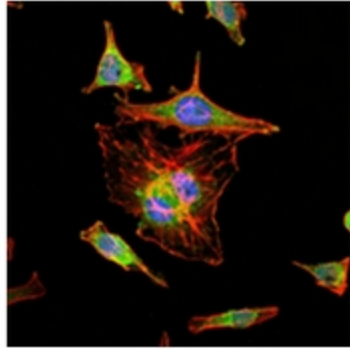
Western blot analysis using HIF1A antibody Cat.-No AM06608SU-N against Cos7 (Lane 1), HeLa (Lane 2), Jurkat (Lane 3), RAJI (Lane 4) and NIH/3T3 (Lane 5) cell lysate.



Immunohistochemical analysis of paraffin-embedded liver cancer tissues (left) and lung cancer tissues (right) using HIF1A antibody Cat.-No AM06608SU-N with DAB staining.



Immunohistochemical analysis of paraffin-embedded stomach cancer tissues (left) and brain tumor tissues (right) using HIF1A antibody Cat.-No AM06608SU-N with DAB staining.



Immunofluorescence analysis of HeLa cells using HIF1A antibody Cat.-No AM06608SU-N (green). Blue: DRAQ5 fluorescent DNA dye. Red: Actin filaments have been labeled with Alexa Fluor-555 phalloidin.