

Product datasheet for **AM06606SU-N**

Hsp60 (HSPD1) Mouse Monoclonal Antibody [Clone ID: 3G8]

Product data:

Product Type:	Primary Antibodies
Clone Name:	3G8
Applications:	ELISA, FC, IF, IHC, WB
Recommended Dilution:	ELISA: 1/10000. Western Blot: 1/500 - 1/2000. Flow Cytometry: 1/200 - 1/400. Immunofluorescence: 1/200 - 1/1000. Immunohistochemistry on Paraffin Sections: 1/200 - 1/1000.
Reactivity:	Human, Monkey, Mouse, Rat
Host:	Mouse
Isotype:	IgG1
Clonality:	Monoclonal
Immunogen:	Purified recombinant fragment of Human HSP60 expressed in E. Coli.
Specificity:	This antibody recognizes HSP60
Formulation:	State: Ascites State: Ascitic fluid containing 0.03% Sodium Azide.
Conjugation:	Unconjugated
Storage:	Store the antibody undiluted at 2-8°C for one month or (in aliquots) at -20°C for longer. Avoid repeated freezing and thawing.
Stability:	Shelf life: one year from despatch.
Predicted Protein Size:	61 kDa
Gene Name:	heat shock protein family D (Hsp60) member 1
Database Link:	Entrez Gene 3329 Human P10809



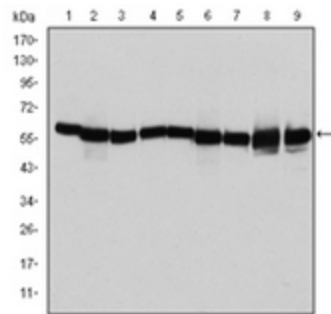
[View online »](#)

Background:

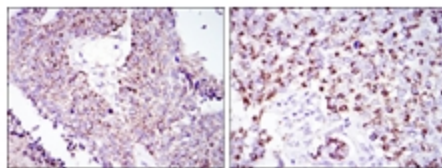
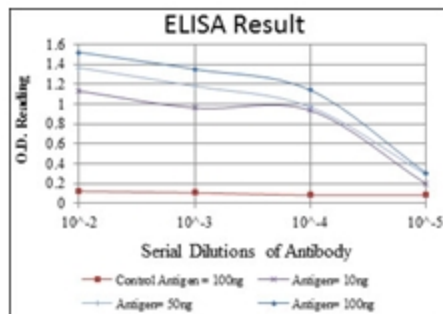
This gene encodes a member of the chaperonin family. The encoded mitochondrial protein may function as a signaling molecule in the innate immune system. This protein is essential for the folding and assembly of newly imported proteins in the mitochondria. This gene is adjacent to a related family member and the region between the 2 genes functions as a bidirectional promoter. Several pseudogenes have been associated with this gene. Two transcript variants encoding the same protein have been identified for this gene. Mutations associated with this gene cause autosomal recessive spastic paraplegia 13. (provided by RefSeq)

Synonyms:

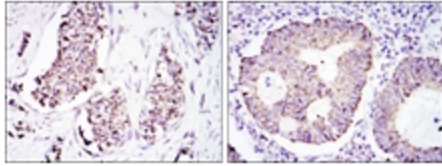
HSP-60, HSPD1, Heat shock protein 60, Chaperonin 60, HuCHA60, GROEL, GroEL Homolog, CPN60

Product images:


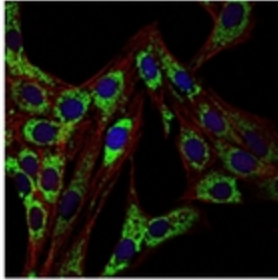
Western blot analysis using HSP60 antibody Cat.-No AM06606SU-N with DAB staining. against T47D (1), HeLa (2), HepG2 (3), A549 (4), Jurkat (5), HEK293 (6), NIH/3T3 (7), PC-12 (8) and Cos7 (9) cell lysate.



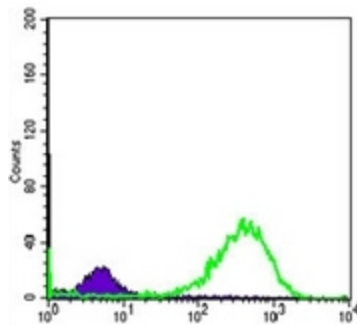
Immunohistochemical analysis of paraffin-embedded lung cancer tissues (left) and kidney cancer tissues (right) using HSP60 antibody Cat.-No AM06606SU-N with DAB staining.



Immunohistochemical analysis of paraffin-embedded breast cancer tissues (left) and colon cancer tissues (right) using HSP60 antibody Cat.-No AM06606SU-N with DAB staining.



Immunofluorescence analysis of 3T3-L1 cells using HSP60 antibody Cat.-No AM06606SU-N (green). Blue: DRAQ5 fluorescent DNA dye. Red: Actin filaments have been labeled with Alexa Fluor-555 phalloidin.



Flow Cytometric analysis of HeLa cells using HSP60 antibody Cat.-No AM06606SU-N (green) and negative control (purple).