

## Product datasheet for **AM06604SU-N**

### LHX2 Mouse Monoclonal Antibody [Clone ID: 6G2]

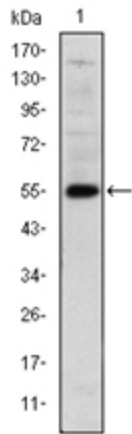
#### Product data:

Product Type:	Primary Antibodies
Clone Name:	6G2
Applications:	ELISA, IF, WB
Recommended Dilution:	<b>ELISA:</b> 1/10000. <b>Western Blot:</b> 1/500 - 1/2000. <b>Immunofluorescence:</b> 1/200 - 1/1000.
Reactivity:	Human
Host:	Mouse
Isotype:	IgG1
Clonality:	Monoclonal
Immunogen:	Purified recombinant fragment of human LHX2 expressed in E. Coli.
Specificity:	This antibody recognizes LHX2
Formulation:	State: Ascites State: Ascitic fluid containing 0.03% Sodium Azide.
Conjugation:	Unconjugated
Storage:	Store the antibody undiluted at 2-8°C for one month or (in aliquots) at -20°C for longer. Avoid repeated freezing and thawing.
Stability:	Shelf life: one year from despatch.
Predicted Protein Size:	44 kDa
Gene Name:	LIM homeobox 2
Database Link:	<a href="#">Entrez Gene 9355 Human P50458</a>
Background:	This gene encodes a protein belonging to a large protein family, members of which carry the LIM domain, a unique cysteine-rich zinc-binding domain. The encoded protein may function as a transcriptional regulator. The protein can recapitulate or rescue phenotypes in Drosophila caused by a related protein, suggesting conservation of function during evolution.
Synonyms:	LHX2, LH2, LIM/homeobox protein Lhx2, LIM homeobox protein 2, Homeobox protein LH-2

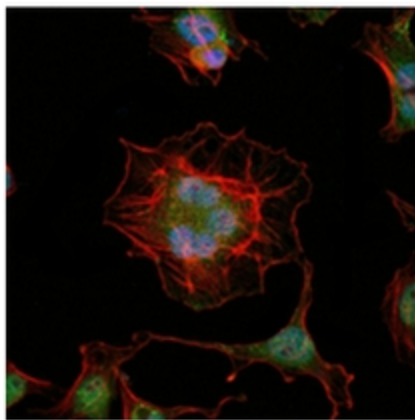
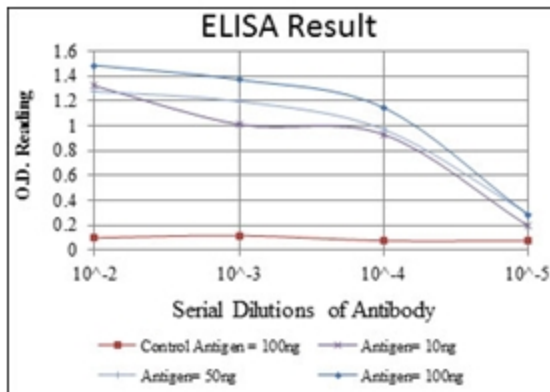


[View online »](#)

Product images:



Western blot analysis using LHX2 antibody Cat.-No AM06604SU-N against Human LHX2 (AA: 200-406) recombinant protein (Expected MW is 55 kDa)



Immunofluorescence analysis of HeLa cells using LHX2 antibody Cat.-No AM06604SU-N (green). Blue: DRAQ5 fluorescent DNA dye. Red: Actin filaments have been labeled with Alexa Fluor-555 phalloidin.