

## Product datasheet for **AM06603SU-N**

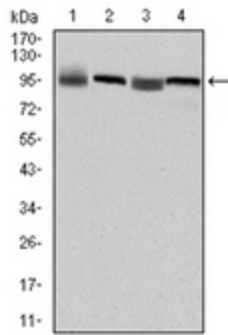
### EEF2 Mouse Monoclonal Antibody [Clone ID: 5B6]

#### Product data:

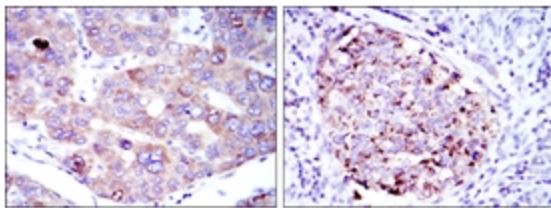
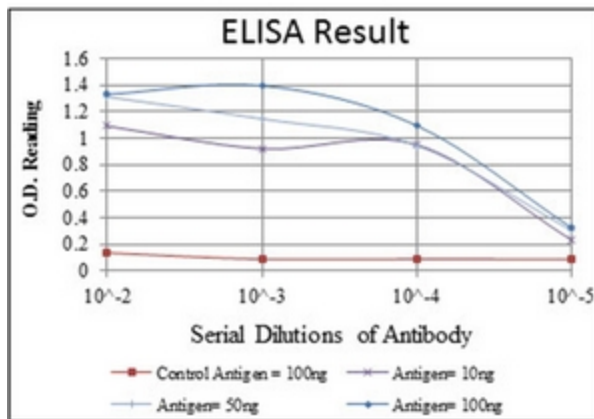
Product Type:	Primary Antibodies
Clone Name:	5B6
Applications:	ELISA, IF, IHC, WB
Recommended Dilution:	<b>ELISA:</b> 1/10000. <b>Western Blot:</b> 1/500 - 1/2000. <b>Immunofluorescence:</b> 1/200 - 1/1000. <b>Immunohistochemistry on Paraffin Sections:</b> 1/200 - 1/1000.
Reactivity:	Human
Host:	Mouse
Isotype:	IgG1
Clonality:	Monoclonal
Immunogen:	Purified recombinant fragment of human EEF2 expressed in E. Coli.
Specificity:	Recognizes EEF2
Formulation:	State: Ascites State: Ascitic fluid containing 0.03% Sodium Azide.
Conjugation:	Unconjugated
Storage:	Store the antibody undiluted at 2-8°C for one month or (in aliquots) at -20°C for longer. Avoid repeated freezing and thawing.
Stability:	Shelf life: one year from despatch.
Predicted Protein Size:	95 kDa
Gene Name:	eukaryotic translation elongation factor 2
Database Link:	<a href="#">Entrez Gene 1938 Human P13639</a>
Background:	This gene encodes a member of the GTP-binding translation elongation factor family. This protein is an essential factor for protein synthesis. It promotes the GTP-dependent translocation of the nascent protein chain from the A-site to the P-site of the ribosome. This protein is completely inactivated by EF-2 kinase phosphorylation. (provided by RefSeq)
Synonyms:	EF-2, EF2, Elongation factor 2



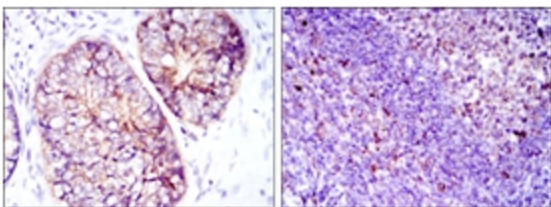
[View online »](#)

**Product images:**


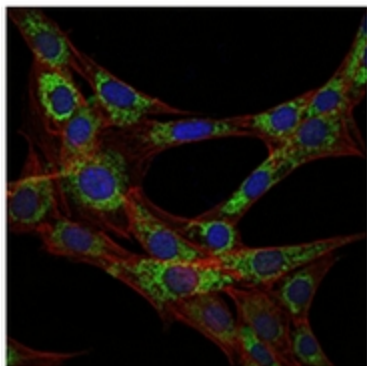
Western blot analysis using EEF2 antibody Cat.-No AM06603SU-N against HepG2 (Lane 1), HeLa (Lane 2), HEK293 (Lane 3) and A431 (Lane 4) cell lysate.



Immunohistochemical analysis of paraffin-embedded liver cancer tissues (left) and kidney cancer tissues (right) using EEF2 antibody Cat.-No AM06603SU-N with DAB staining.



Immunohistochemical analysis of paraffin-embedded prostate cancer tissues (left) and tonsil tissues (right) using antibody Cat.-No AM06603SU-N with DAB staining.



Immunofluorescence analysis of 3T3-L1 cells using EEF2 antibody Cat.-No AM06603SU-N (green). Blue: DRAQ5 fluorescent DNA dye. Red: Actin filaments have been labeled with Alexa Fluor-555 phalloidin.