

Product datasheet for **AM06602SU-N**

EIF4E Mouse Monoclonal Antibody [Clone ID: 5D11]

Product data:

Product Type:	Primary Antibodies
Clone Name:	5D11
Applications:	ELISA, FC, IF, IHC, WB
Recommended Dilution:	ELISA: 1/10000. Western Blot: 1/500 - 1/2000. Flow Cytometry: 1/200 - 1/400. Immunofluorescence: 1/200 - 1/1000. Immunohistochemistry on Paraffin Sections: 1/200 - 1/1000.
Reactivity:	Human
Host:	Mouse
Isotype:	IgG1
Clonality:	Monoclonal
Immunogen:	Purified recombinant fragment of Human EIF4E expressed in E. Coli.
Specificity:	Recognizes EIF4E
Formulation:	State: Ascites State: Ascitic fluid containing 0.03% Sodium Azide.
Conjugation:	Unconjugated
Storage:	Store the antibody undiluted at 2-8°C for one month or (in aliquots) at -20°C for longer. Avoid repeated freezing and thawing.
Stability:	Shelf life: one year from despatch.
Predicted Protein Size:	25 kDa
Gene Name:	eukaryotic translation initiation factor 4E
Database Link:	Entrez Gene 1977 Human P06730



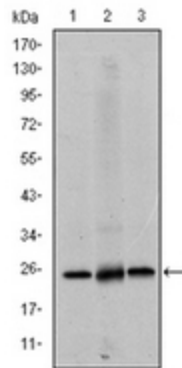
[View online »](#)

Background:

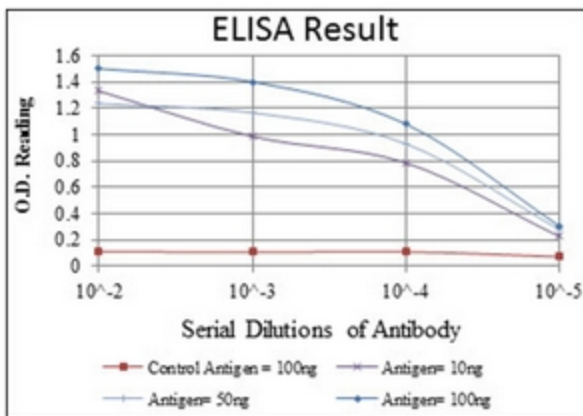
eIF4E, a protein modulates translation of maternal mRNAs in early embryos before the onset of zygotic transcription. eIF4E also influences the overall rate of translation. eIF4E binds to the 7 methyl GTP cap structure of eukaryotic mRNAs. Phosphorylation of eIF4E on serine 209 regulates the affinity of this protein for the 7 methyl GTP cap and/or RNA. Phosphorylation also enhances the interaction of eIF4E with eIF4G, which form a complex known as eIF4F. eIF4E phosphorylation is correlated with increased translational rate in a number of cell types. Several kinases are currently being investigated as potential regulators of eIF4E including PKC and/or the MAP kinase activated Mnk.

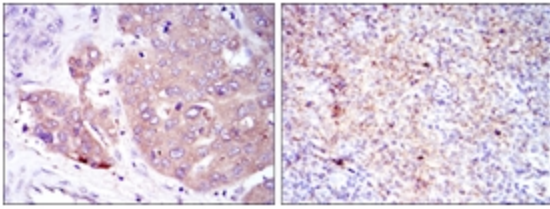
Synonyms:

eIF-4F 25 kDa subunit, EIF-4E, EIF4EL1, EIF4F

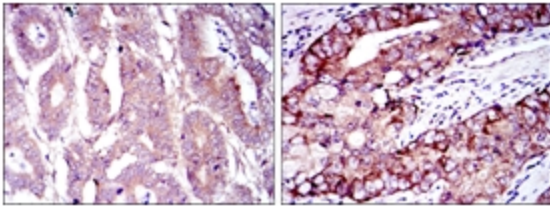
Product images:


Western blot analysis using EIF4E antibody Cat.-No AM06602SU-N against Hela (Lane 1), HEK293 (Lane 2) and K562 (Lane 3) cell lysate.

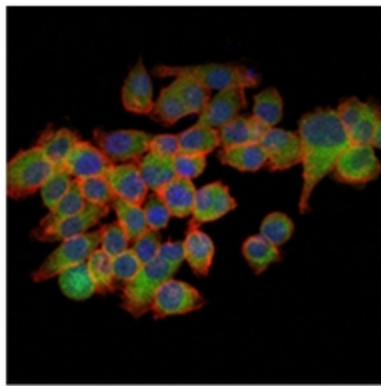




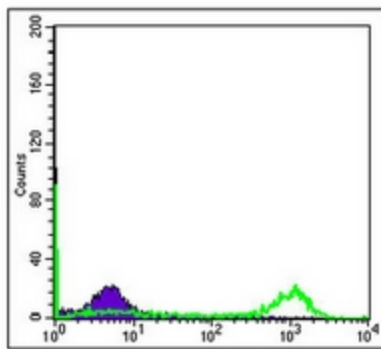
Immunohistochemical analysis of paraffin-embedded liver cancer (left) and submaxillary tumor (right) using EIF4E antibody Cat.-No AM06602SU-N with DAB staining.



Immunohistochemical analysis of paraffin-embedded stomach cancer (left) and prostate cancer (right) using EIF4E antibody Cat.-No AM06602SU-N with DAB staining.



Immunofluorescence analysis of GC-7901 cells using EIF4E antibody Cat.-No AM06602SU-N (green). Blue: DRAQ5 fluorescent DNA dye. Red: Actin filaments have been labeled with Alexa Fluor-555 phalloidin.



Flow Cytometric analysis of HeLa cells using EIF4E antibody Cat.-No AM06602SU-N (green) and negative control (purple).