

Product datasheet for **AM06601SU-N**

Cortactin (CTTN) Mouse Monoclonal Antibody [Clone ID: 4C6]

Product data:

Product Type:	Primary Antibodies
Clone Name:	4C6
Applications:	ELISA, IHC, WB
Recommended Dilution:	ELISA: 1/10000. Western Blot: 1/500 - 1/2000. Immunohistochemistry on Paraffin Sections: 1/200 - 1/1000.
Reactivity:	Human, Mouse
Host:	Mouse
Isotype:	IgG1
Clonality:	Monoclonal
Immunogen:	Purified recombinant fragment of Human CTTN expressed in E. Coli.
Specificity:	Recognizes CTTN
Formulation:	State: Ascites State: Ascitic fluid containing 0.03% Sodium Azide.
Conjugation:	Unconjugated
Storage:	Store the antibody undiluted at 2-8°C for one month or (in aliquots) at -20°C for longer. Avoid repeated freezing and thawing.
Stability:	Shelf life: one year from despatch.
Predicted Protein Size:	80 kDa
Gene Name:	cortactin
Database Link:	Entrez Gene 2017 Human Q14247



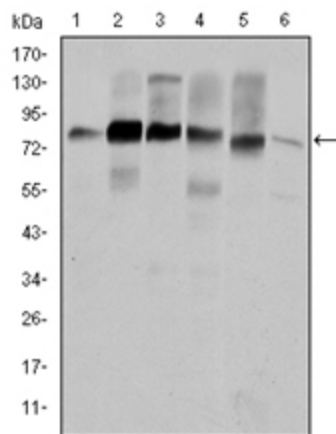
[View online »](#)

Background:

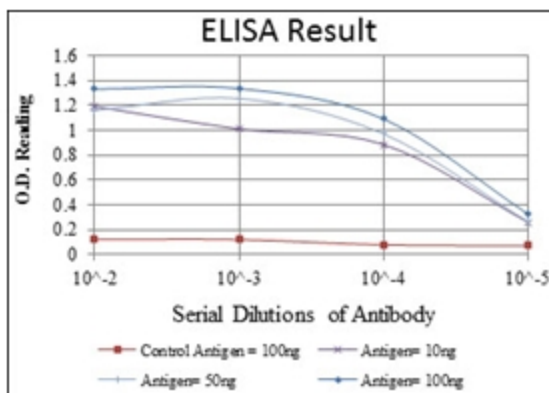
This gene is overexpressed in breast cancer and squamous cell carcinomas of the head and neck. The encoded protein is localized in the cytoplasm and in areas of the cell-substratum contacts. This gene has two roles: (1) regulating the interactions between components of adherens-type junctions and (2) organizing the cytoskeleton and cell adhesion structures of epithelia and carcinoma cells. During apoptosis, the encoded protein is degraded in a caspase-dependent manner. The aberrant regulation of this gene contributes to tumor cell invasion and metastasis. Three splice variants that encode different isoforms have been identified for this gene.

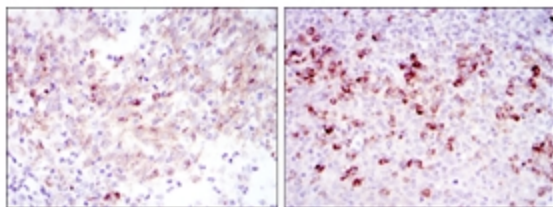
Synonyms:

CTTN, EMS1, Amplexin, Oncogene EMS1

Product images:


Western blot analysis using CTTN antibody Cat.-No AM06601SU-N against HeLa (Lane 1), A431 (Lane 2), MCF-7 (Lane 3), SR-BR-3 (Lane 4), HepG2 (Lane 5) and NIH/3T3 (Lane 6) cell lysate.





Immunohistochemical analysis of paraffin-embedded cervical cancer tissues (left) and tonsil tissues (right) using CTTN antibody Cat.-No AM06601SU-N with DAB staining.