

Product datasheet for **AM06595SU-N**

Beclin 1 (BECN1) Mouse Monoclonal Antibody [Clone ID: 2A4]

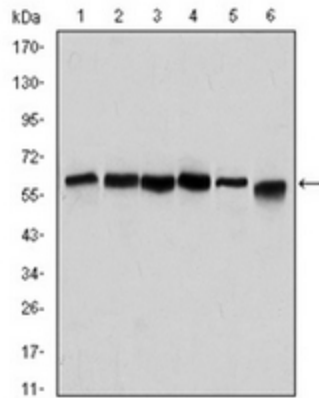
Product data:

Product Type:	Primary Antibodies
Clone Name:	2A4
Applications:	ELISA, FC, IHC, WB
Recommended Dilution:	ELISA: 1/10000. Western Blot: 1/500 - 1/2000. Flow Cytometry: 1/200 - 1/400. Immunohistochemistry on Paraffin Sections: 1/200 - 1/1000.
Reactivity:	Human
Host:	Mouse
Isotype:	IgG1
Clonality:	Monoclonal
Immunogen:	Purified recombinant fragment of Human BECN1 expressed in E. Coli.
Specificity:	Recognizes Beclin-1
Formulation:	State: Ascites State: Ascitic fluid containing 0.03% Sodium Azide.
Conjugation:	Unconjugated
Storage:	Store the antibody undiluted at 2-8°C for one month or (in aliquots) at -20°C for longer. Avoid repeated freezing and thawing.
Stability:	Shelf life: one year from despatch.
Predicted Protein Size:	60 kDa
Gene Name:	beclin 1
Database Link:	Entrez Gene 8678 Human Q14457
Background:	Beclin-1 participates in the regulation of autophagy and has an important role in development, tumorigenesis, and neurodegeneration (Zhong et al., 2009 (PubMed 19270693)).(supplied by OMIM) . Tissue specificity: Ubiquitous.
Synonyms:	BECN1, GT197

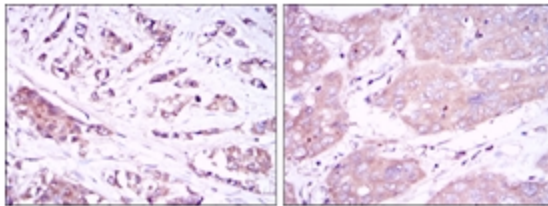
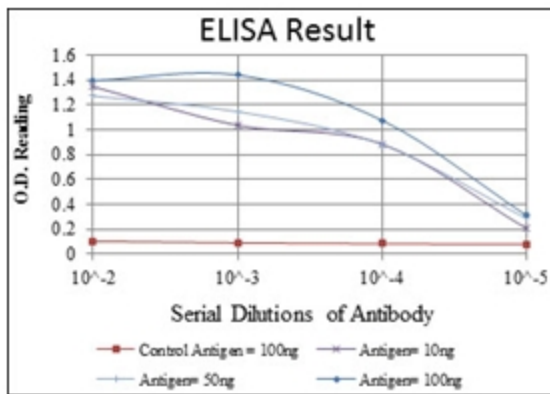


[View online »](#)

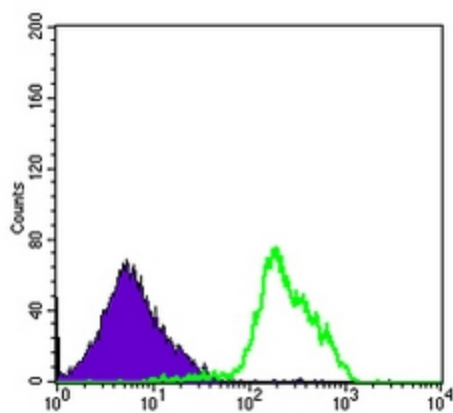
Product images:



Western blot analysis using BECN1 antibody Cat.-No AM06595SU-N against HeLa (1), A431 (2), MCF-7 (3), RAJI (4), Jurkat (5) and SKBR-3 (6) cell lysate.



Immunohistochemical analysis of paraffin-embedded breast cancer tissues (left) and liver cancer tissues (right) using BECN1 antibody Cat.-No AM06595SU-N with DAB staining.



Flow cytometric analysis of RAJI cells using BECN1 antibody Cat.-No AM06595SU-N (green) and negative control (purple).