

Product datasheet for **AM06592SU-N**

E7 Mouse Monoclonal Antibody [Clone ID: 6F3]

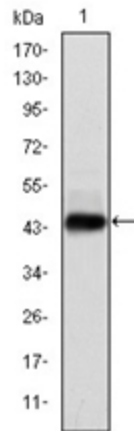
Product data:

Product Type:	Primary Antibodies
Clone Name:	6F3
Applications:	ELISA, IHC, WB
Recommended Dilution:	ELISA: 1/10000. Western Blot: 1/500-1/2000. Immunohistochemistry on Paraffin Sections: 1/200-1/1000.
Reactivity:	Human
Host:	Mouse
Isotype:	IgG1
Clonality:	Monoclonal
Immunogen:	Purified recombinant fragment of E7 expressed in E. Coli.
Specificity:	Recognizes Human Papilloma Virus type 16 E7. Other species not tested.
Formulation:	State: Ascites State: Ascitic fluid containing 0.03% Sodium Azide.
Conjugation:	Unconjugated
Storage:	Store undiluted at 2-8°C for one month or (in aliquots) at -20°C for longer. Avoid repeated freezing and thawing.
Stability:	Shelf life: one year from despatch.
Predicted Protein Size:	21 kDa
Database Link:	P03129
Background:	E7 transforming protein (Human Papillomavirus type 16).
Synonyms:	Human Papilloma Virus Early protein 7

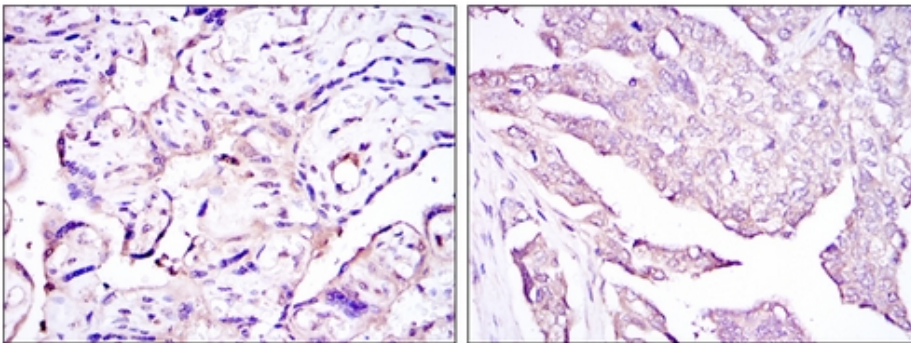
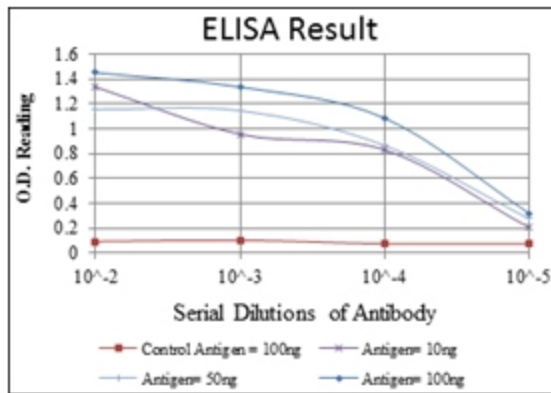


[View online »](#)

Product images:



Western blot analysis using HPV16 E7 antibody Cat.-No AM06592SU-N against Human E7 (AA: 1-98) recombinant protein.



Immunohistochemical analysis of paraffin-embedded placenta tissues (left) and ovarian cancer (right) using HPV16 E7 antibody Cat.-No AM06592SU-N with DAB staining.