

## Product datasheet for **AM06590SU-N**

### MSI1 Mouse Monoclonal Antibody [Clone ID: 2A12]

#### Product data:

Product Type:	Primary Antibodies
Clone Name:	2A12
Applications:	ELISA, FC, WB
Recommended Dilution:	<b>ELISA:</b> 1/10000. <b>Western Blot:</b> 1/500 - 1/2000. <b>Flow Cytometry:</b> 1/200 - 1/400.
Reactivity:	Human
Host:	Mouse
Isotype:	IgG1
Clonality:	Monoclonal
Immunogen:	Purified recombinant fragment of Human MSI1 expressed in E. Coli.
Specificity:	Recognizes Musashi-1
Formulation:	State: Ascites State: Ascitic fluid containing 0.03% Sodium Azide.
Conjugation:	Unconjugated
Storage:	Store the antibody undiluted at 2-8°C for one month or (in aliquots) at -20°C for longer. Avoid repeated freezing and thawing.
Stability:	Shelf life: one year from despatch.
Predicted Protein Size:	29 kDa
Gene Name:	musashi RNA binding protein 1
Database Link:	<a href="#">Entrez Gene 4440 Human</a> <a href="#">O43347</a>



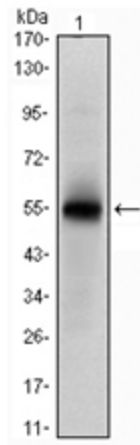
[View online »](#)

**Background:**

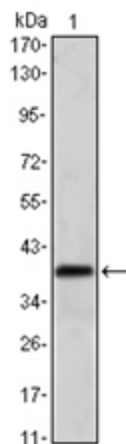
This gene encodes a protein containing two conserved tandem RNA recognition motifs. Similar proteins in other species function as RNA-binding proteins and play central roles in posttranscriptional gene regulation. Expression of this gene has been correlated with the grade of the malignancy and proliferative activity in gliomas and melanomas. Musashi-1 is frequently used as a marker for proliferating neural precursor cells, it is also expressed in epithelial stem cells including intestinal and mammary gland stem cells. Tissue specificity: Detected in fetal kidney, brain, liver and lung, and in adult brain and pancreas. Detected in hepatoma cell lines.

**Synonyms:**

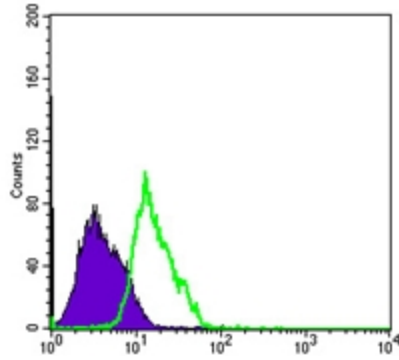
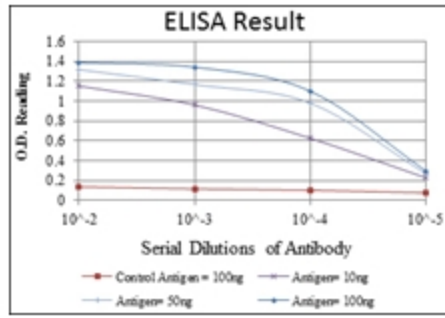
MSI1

**Product images:**

Western blot analysis using MSI1 antibody Cat.-No AM06590SU-N against Human MSI1 (AA: 1-203) recombinant protein (Expected MW is 48.5 kDa)



Western blot analysis using MSI1 antibody Cat.-No AM06590SU-N against NTERA-2 cell lysate.



Flow Cytometric analysis of PC-2 cells using MSI1 antibody Cat.-No AM06590SU-N (green) and negative control (purple).