

Product datasheet for **AM06586SU-N**

CD94 (KLRD1) Mouse Monoclonal Antibody [Clone ID: 1H1]

Product data:

Product Type:	Primary Antibodies
Clone Name:	1H1
Applications:	ELISA, FC, WB
Recommended Dilution:	ELISA: 1/10000. Western Blot: 1/500 - 1/2000. Flow Cytometry: 1/200 - 1/400.
Reactivity:	Human
Host:	Mouse
Isotype:	IgG1
Clonality:	Monoclonal
Immunogen:	Purified recombinant fragment of Human CD94 expressed in E. Coli.
Specificity:	Recognizes CD94
Formulation:	State: Ascites State: Ascitic fluid containing 0.03% Sodium Azide.
Conjugation:	Unconjugated
Storage:	Store the antibody undiluted at 2-8°C for one month or (in aliquots) at -20°C for longer. Avoid repeated freezing and thawing.
Stability:	Shelf life: one year from despatch.
Predicted Protein Size:	21 kDa
Gene Name:	killer cell lectin like receptor D1
Database Link:	Entrez Gene 3824 Human Q13241



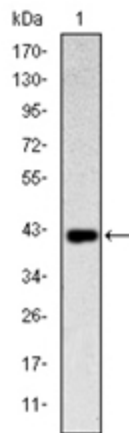
[View online »](#)

Background:

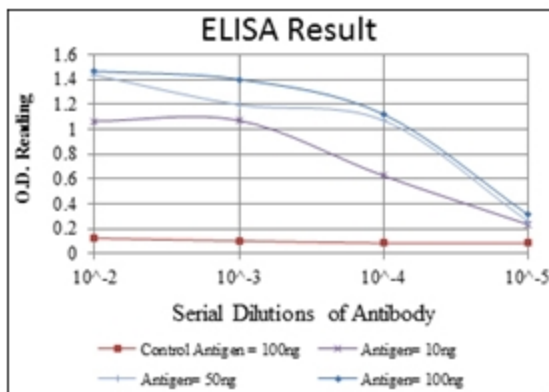
Natural killer (NK) cells are a distinct lineage of lymphocytes that mediate cytotoxic activity and secrete cytokines upon immune stimulation. Several genes of the C-type lectin superfamily, including members of the NKG2 family, are expressed by NK cells and may be involved in the regulation of NK cell function. KLRD1 (CD94) is an antigen preferentially expressed on NK cells and is classified as a type II membrane protein because it has an external C terminus. Plays a role as a receptor for the recognition of MHC class I HLA-E molecules by NK cells and some cytotoxic T-cells.
 Tissue specificity: Natural killer cells.

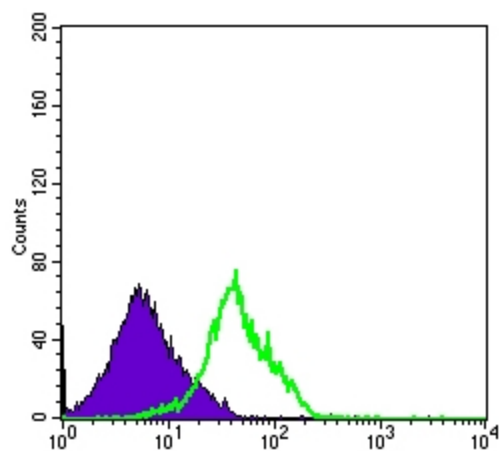
Synonyms:

KLRD1, KP43, NK cell receptor

Product images:


Western blot analysis using CD94 antibody Cat.-No AM06586SU-N against human CD94 (AA: 32-179) recombinant protein (Expected MW is 42.6 kDa)





Flow cytometric analysis of RAJI cells using CD94 antibody Cat.-No AM06586SU-N (green) and negative control (purple).