

Product datasheet for **AM06585SU-N**

ATM Mouse Monoclonal Antibody [Clone ID: 5C5]

Product data:

Product Type:	Primary Antibodies
Clone Name:	5C5
Applications:	ELISA, WB
Recommended Dilution:	ELISA: 1/10000. Western Blot: 1/500 - 1/2000.
Reactivity:	Human
Host:	Mouse
Isotype:	IgG1
Clonality:	Monoclonal
Immunogen:	Purified recombinant fragment of Human ATM expressed in E. Coli.
Specificity:	Recognizes ATM
Formulation:	State: Ascites State: Ascitic fluid containing 0.03% Sodium Azide.
Conjugation:	Unconjugated
Storage:	Store the antibody undiluted at 2-8°C for one month or (in aliquots) at -20°C for longer. Avoid repeated freezing and thawing.
Stability:	Shelf life: one year from despatch.
Predicted Protein Size:	351 kDa
Gene Name:	ATM serine/threonine kinase
Database Link:	Entrez Gene 472 Human Q13315



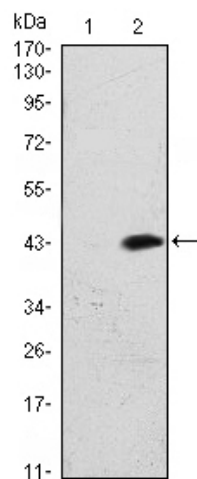
[View online »](#)

Background:

The protein encoded by this gene belongs to the PI3/PI4-kinase family. This protein is an important cell cycle checkpoint kinase that phosphorylates; thus, it functions as a regulator of a wide variety of downstream proteins, including tumor suppressor proteins p53 and BRCA1, checkpoint kinase CHK2, checkpoint proteins RAD17 and RAD9, and DNA repair protein NBS1. This protein and the closely related kinase ATR are thought to be master controllers of cell cycle checkpoint signaling pathways that are required for cell response to DNA damage and for genome stability. Mutations in this gene are associated with ataxia telangiectasia, an autosomal recessive disorder. Tissue specificity: Found in pancreas, kidney, skeletal muscle, liver, lung, placenta, brain, heart, spleen, thymus, testis, ovary, small intestine, colon and leukocytes.

Synonyms:

Serine-protein kinase ATM, Ataxia telangiectasia mutated, A-T mutated, ATDC, TEL1, TELO1

Product images:


Western blot analysis using ATM antibody Cat.-No AM06585SU-N against HEK293 (1) and ATM (AA: 2705-2820)-hIgGfc transfected HEK293 (2) cell lysate.

