

Product datasheet for **AM06581SU-N**

CRTC3 Mouse Monoclonal Antibody [Clone ID: 5G9]

Product data:

Product Type:	Primary Antibodies
Clone Name:	5G9
Applications:	ELISA, IF, IHC, WB
Recommended Dilution:	ELISA: 1/10000. Western Blot: 1/500 - 1/2000. Immunofluorescence: 1/200 - 1/1000. Immunohistochemistry on Paraffin Sections: 1/200 - 1/1000.
Reactivity:	Human, Monkey
Host:	Mouse
Isotype:	IgG1
Clonality:	Monoclonal
Immunogen:	Purified recombinant fragment of human CRTC3 expressed in E. Coli.
Specificity:	Recognizes CRTC3
Formulation:	State: Ascites State: Ascitic fluid containing 0.03% Sodium Azide.
Conjugation:	Unconjugated
Storage:	Store the antibody undiluted at 2-8°C for one month or (in aliquots) at -20°C for longer. Avoid repeated freezing and thawing.
Stability:	Shelf life: one year from despatch.
Predicted Protein Size:	68 kDa
Gene Name:	CREB regulated transcription coactivator 3
Database Link:	Entrez Gene 64784 Human Q6UUV7



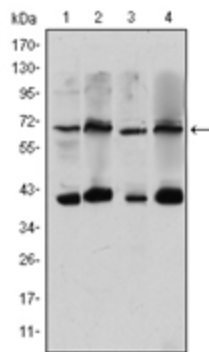
[View online »](#)

Background:

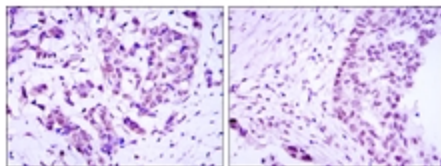
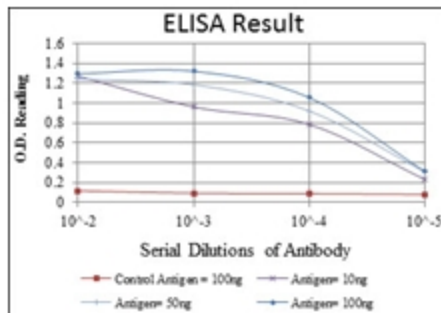
Transcriptional coactivator for CREB1 which activates transcription through both consensus and variant cAMP response element (CRE) sites. Acts as a coactivator, in the SIK/TORC signaling pathway, being active when dephosphorylated and acts independently of CREB1 'Ser-133' phosphorylation. Enhances the interaction of CREB1 with TAF4. Regulates the expression of specific CREB-activated genes such as the steroidogenic gene, StAR. Potent coactivator of PPARGC1A and inducer of mitochondrial biogenesis in muscle cells. Also coactivator for TAX activation of the human T-cell leukemia virus type 1 (HTLV-1) long terminal repeats (LTR). Tissue specificity: Predominantly expressed in B and T lymphocytes. Highest levels in lung. Also expressed in brain, colon, heart, kidney, ovary, and prostate. Weak expression in liver, pancreas, muscle, small intestine, spleen and stomach.

Synonyms:

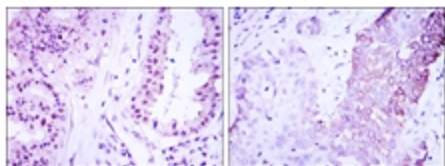
TORC3, TORC-3

Product images:


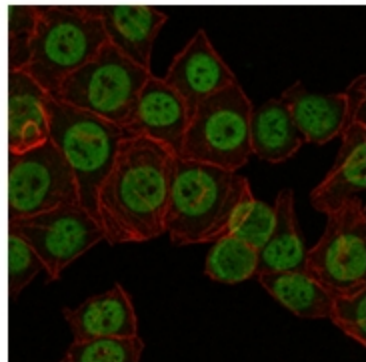
Western blot analysis using CRTC3 mouse mAb against HeLa (1), Jurkat (2), Cos7 (3) and MCF-7 (4) cell lysate.



Immunohistochemical analysis of paraffin-embedded breast cancer (left) and ovarian cancer (right) using CRTC3 mouse mAb with DAB staining.



Immunohistochemical analysis of paraffin-embedded lung cancer (left) and esophagus cancer (right) using CRTC3 mouse mAb with DAB staining.



Immunofluorescence analysis of NTERA-2 cells using CRTC3 mouse mAb (green). Red: Actin filaments have been labeled with Alexa Fluor-555 phalloidin.