

## Product datasheet for **AM06577SU-N**

### **MEK6 (MAP2K6) Mouse Monoclonal Antibody [Clone ID: 3H12C8]**

#### **Product data:**

Product Type:	Primary Antibodies
Clone Name:	3H12C8
Applications:	ELISA, FC, IF, WB
Recommended Dilution:	<b>ELISA:</b> 1/10000. <b>Western Blot:</b> 1/500 - 1/2000. <b>Immunofluorescence:</b> 1/200 - 1/1000. <b>Flow Cytometry:</b> 1/200 - 1/400.
Reactivity:	Human, Mouse
Host:	Mouse
Isotype:	IgG1
Clonality:	Monoclonal
Immunogen:	Purified recombinant fragment of Human MAP2K6 expressed in E. Coli.
Specificity:	Recognizes MAP2K6
Formulation:	State: Ascites State: Ascitic fluid containing 0.03% Sodium Azide.
Conjugation:	Unconjugated
Storage:	Store the antibody undiluted at 2-8°C for one month or (in aliquots) at -20°C for longer. Avoid repeated freezing and thawing.
Stability:	Shelf life: one year from despatch.
Predicted Protein Size:	38 kDa
Gene Name:	mitogen-activated protein kinase kinase 6
Database Link:	<a href="#">Entrez Gene 5608 Human P52564</a>



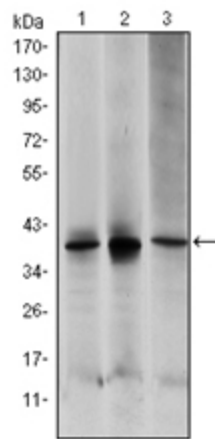
[View online »](#)

**Background:**

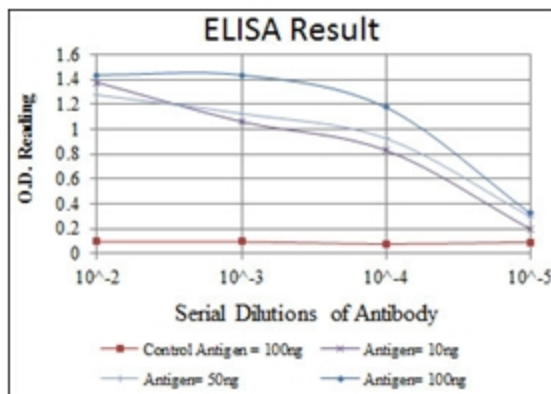
This gene encodes a member of the dual specificity protein kinase family, which functions as a mitogen-activated protein (MAP) kinase kinase. MAP kinases, also known as extracellular signal-regulated kinases (ERKs), act as an integration point for multiple biochemical signals. This protein phosphorylates and activates p38 MAP kinase in response to inflammatory cytokines or environmental stress. As an essential component of p38 MAP kinase mediated signal transduction pathway, this gene is involved in many cellular processes such as stress induced cell cycle arrest, transcription activation and apoptosis. Tissue specificity: Isoform 2 is only expressed in skeletal muscle. Isoform 1, on the other hand, is found in skeletal muscle, heart, and in lesser extent in liver or pancreas .

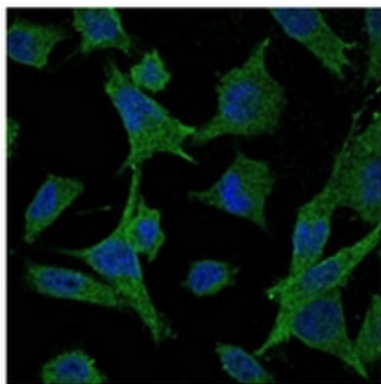
**Synonyms:**

MAPKK 6, MAPK/ERK kinase 6, SAPKK3, MEK6, MKK6, MAP kinase kinase 6

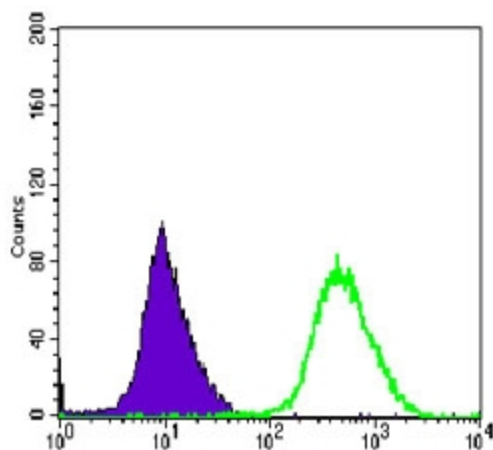
**Product images:**


Western blot analysis using MAP2K6 antibody Cat.-No AM06577SU-N against HepG2 (1), MCF-7 (2) and NIH/3T3 (3) cell lysate.





Immunofluorescence analysis of HeLa cells using MAP2K6 antibody Cat.-No AM06577SU-N (green). Blue: DRAQ5 fluorescent DNA dye.



Flow Cytometric analysis of HeLa cells using MAP2K6 antibody Cat.-No AM06577SU-N (green) and negative control (purple).