

Product datasheet for **AM06571SU-N**

Glycogen synthase 1 (GYS1) Mouse Monoclonal Antibody [Clone ID: 3A7]

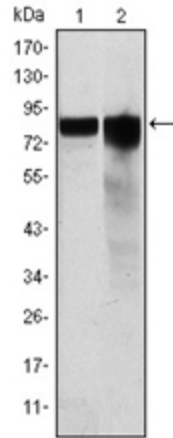
Product data:

Product Type:	Primary Antibodies
Clone Name:	3A7
Applications:	ELISA, FC, WB
Recommended Dilution:	ELISA: 1/10000. Western Blot: 1/500 - 1/2000. Flow Cytometry: 1/200 - 1/400.
Reactivity:	Human
Host:	Mouse
Isotype:	IgG1
Clonality:	Monoclonal
Immunogen:	Purified recombinant fragment of Human GYS1 expressed in E. Coli.
Specificity:	Recognizes Glycogen synthase, skeletal muscle
Formulation:	State: Ascites State: Ascitic fluid containing 0.03% Sodium Azide.
Conjugation:	Unconjugated
Storage:	Store the antibody undiluted at 2-8°C for one month or (in aliquots) at -20°C for longer. Avoid repeated freezing and thawing.
Stability:	Shelf life: one year from despatch.
Predicted Protein Size:	85 kDa
Gene Name:	glycogen synthase 1
Database Link:	Entrez Gene 2997 Human P13807
Background:	Glycogen synthase, skeletal muscle, the rate limiting enzyme of the insulin-induced glycogenesis. The protein encoded by this gene catalyzes the addition of glucose monomers to the growing glycogen molecule through the formation of alpha-1, 4-glycoside linkages. Mutations in this gene are associated with muscle glycogen storage disease. Muscle GS is expressed in several tissues.
Synonyms:	GYS1, GYS

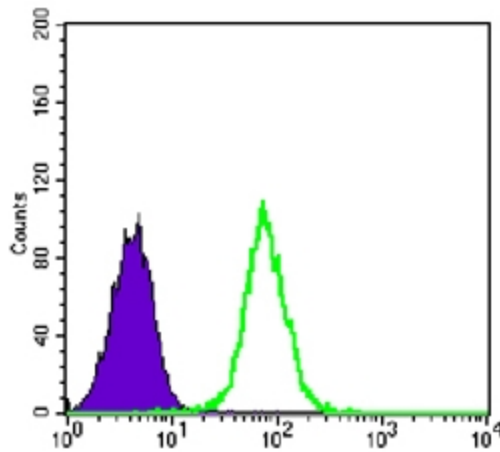
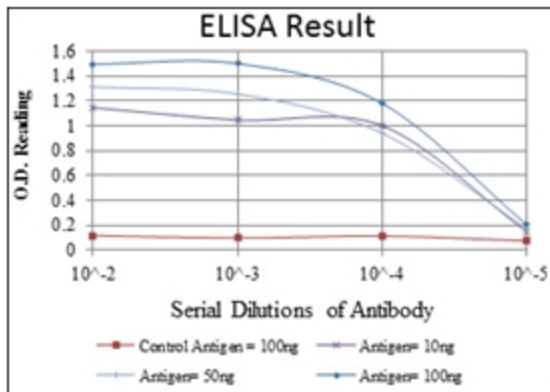


[View online »](#)

Product images:



Western blot analysis using GYS1 antibody Cat.-No AM06571SU-N against HeLa (Lane 1) and HEK293 (Lane 2) cell lysate.



Flow Cytometric analysis of K562 cells using GYS1 GYS1 antibody Cat.-No AM06571SU-N (green) and negative control (purple).