

## Product datasheet for **AM06570SU-N**

### Glucocorticoid Receptor (NR3C1) Mouse Monoclonal Antibody [Clone ID: 6E6]

#### Product data:

|                         |  |
|-------------------------|--|
| Product Type:           | Primary Antibodies   |
| Clone Name:             | 6E6  |
| Applications:           | ELISA, FC, IF, IHC, WB   |
| Recommended Dilution:   | <b>ELISA:</b> 1/10000.<br><b>Western Blot:</b> 1/500 - 1/2000.<br><b>Flow Cytometry:</b> 1/200 - 1/400.<br><b>Immunofluorescence:</b> 1/200 - 1/1000.<br><b>Immunohistochemistry on Paraffin Sections:</b> 1/200 - 1/1000. |
| Reactivity:             | Human  |
| Host:                   | Mouse  |
| Isotype:                | IgG1   |
| Clonality:              | Monoclonal   |
| Immunogen:              | Purified recombinant fragment of Human NR3C1 expressed in E. Coli.   |
| Specificity:            | Recognizes Glucocorticoid receptor   |
| Formulation:            | State: Ascites<br>State: Ascitic fluid containing 0.03% Sodium Azide.  |
| Conjugation:            | Unconjugated   |
| Storage:                | Store the antibody undiluted at 2-8°C for one month or (in aliquots) at -20°C for longer.<br>Avoid repeated freezing and thawing.  |
| Stability:              | Shelf life: one year from despatch.  |
| Predicted Protein Size: | 86 kDa   |
| Gene Name:              | nuclear receptor subfamily 3 group C member 1  |
| Database Link:          | <a href="#">Entrez Gene 2908 Human P04150</a>  |



[View online »](#)

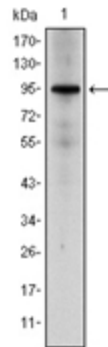
**Background:**

The protein encoded by this gene is a receptor for glucocorticoids that can act as both a transcription factor and as a regulator of other transcription factors. This protein can also be found in heteromeric cytoplasmic complexes along with heat shock factors and immunophilins. The protein is typically found in the cytoplasm until it binds a ligand, which induces transport into the nucleus. Mutations in this gene are a cause of glucocorticoid resistance, or cortisol, resistance. Tissue specificity: Widely expressed. In the heart, detected in left and right atria, left and right ventricles, aorta, apex, intraventricular septum, and atrioventricular node as well as whole adult and fetal heart.

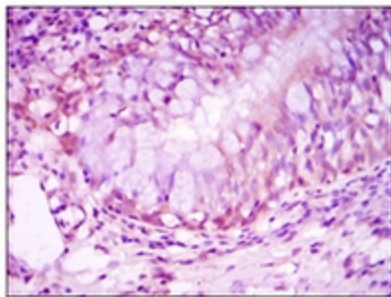
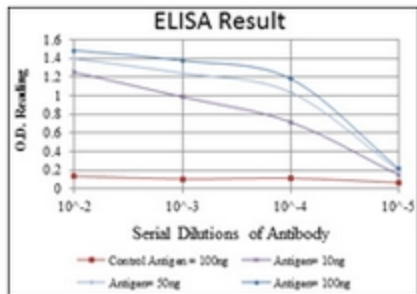
**Synonyms:**

NR3C1, GR, GRL

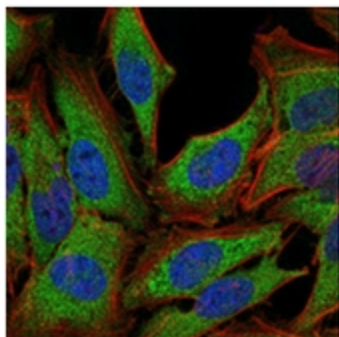
**Product images:**



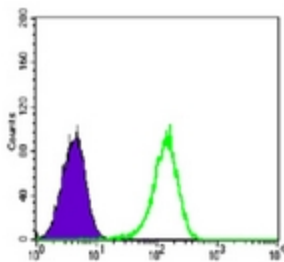
Western blot analysis using NR3C1 antibody Cat.-No AM06570SU-N against Hela cell lysate.



Immunohistochemical analysis of paraffin-embedded lung cancer tissues using NR3C1 antibody Cat.-No AM06570SU-N with DAB staining.



Immunofluorescence analysis of PC-2 cells using NR3C1 antibody Cat.-No AM06570SU-N (green). Blue: DRAQ5 fluorescent DNA dye. Red: Actin filaments have been labeled with Alexa Fluor-555 phalloidin.



Flow Cytometric analysis of K562 cells using NR3C1 antibody Cat.-No AM06570SU-N (green) and negative control (purple).