

Product datasheet for **AM06568SU-N**

CEACAM5 Mouse Monoclonal Antibody [Clone ID: 3G12]

Product data:

Product Type:	Primary Antibodies
Clone Name:	3G12
Applications:	ELISA, IF, WB
Recommended Dilution:	ELISA: 1/10000. Western Blot: 1/500 - 1/2000. Immunofluorescence: 1/200 - 1/1000.
Reactivity:	Human
Host:	Mouse
Isotype:	IgG1
Clonality:	Monoclonal
Immunogen:	Purified recombinant fragment of Human CEA expressed in E. Coli.
Specificity:	Recognizes CEA (CD66e/CEACAM5).
Formulation:	State: Ascites State: Ascitic fluid containing 0.03% Sodium Azide.
Conjugation:	Unconjugated
Storage:	Store the antibody undiluted at 2-8°C for one month or (in aliquots) at -20°C for longer. Avoid repeated freezing and thawing.
Stability:	Shelf life: one year from despatch.
Predicted Protein Size:	77 kDa
Gene Name:	carcinoembryonic antigen related cell adhesion molecule 5
Database Link:	Entrez Gene 1048 Human P06731



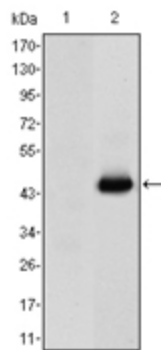
[View online »](#)

Background:

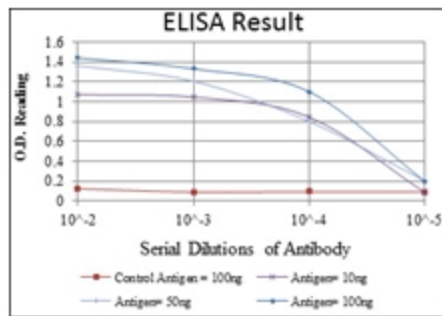
Carcino Embryonic Antigen (CEA) is synthesised during development in the fetal gut, and is re-expressed in increased amounts in intestinal carcinomas and several other tumors. Antibodies to CEA are useful in identifying the origin of various metastatic adenocarcinomas and in distinguishing pulmonary adenocarcinomas (60 to 70% are CEA+) from pleural mesotheliomas (rarely or weakly CEA+). The carcinoembryonic antigen (CEA) is a member of a large family of glycoproteins and a useful tumor marker for adenocarcinoma. Tissue specificity: Found in adenocarcinomas of endodermally derived digestive system epithelium and fetal colon.

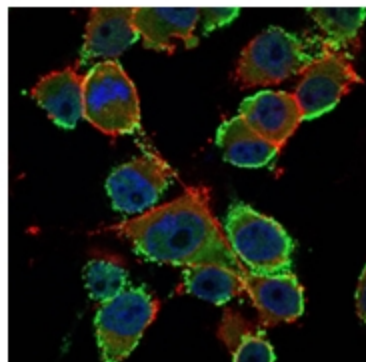
Synonyms:

CEA, Carcinoembryonic antigen

Product images:


Western blot analysis using CEA antibody Cat.-No AM06568SU-N against HEK293 (1) and CEA (AA: 460-600)-hlgGFc transfected HEK293 (2) cell lysate.





Immunofluorescence analysis of PANC-1 cells using CEA antibody Cat.-No AM06568SU-N (green). Blue: DRAQ5 fluorescent DNA dye. Red: Actin filaments have been labeled with Alexa Fluor-555 phalloidin.