

## Product datasheet for **AM06565SU-N**

### PRMT4 (CARM1) Mouse Monoclonal Antibody [Clone ID: 3H2]

#### Product data:

|                         |  |
|-------------------------|--|
| Product Type:           | Primary Antibodies   |
| Clone Name:             | 3H2  |
| Applications:           | ELISA, FC, IF, IHC, WB   |
| Recommended Dilution:   | <b>ELISA:</b> 1/10000.<br><b>Western Blot:</b> 1/500 - 1/2000.<br><b>Immunofluorescence:</b> 1/200 - 1/1000.<br><b>Flow Cytometry:</b> 1/200 - 1/400.<br><b>Immunohistochemistry on Paraffin Sections:</b> 1/200 - 1/1000. |
| Reactivity:             | Human, Monkey, Rat   |
| Host:                   | Mouse  |
| Isotype:                | IgG1   |
| Clonality:              | Monoclonal   |
| Immunogen:              | Purified recombinant fragment of Human CARM1 expressed in E. Coli.   |
| Specificity:            | Recognizes CARM1   |
| Formulation:            | State: Ascites<br>State: Ascitic fluid containing 0.03% Sodium Azide.  |
| Conjugation:            | Unconjugated   |
| Storage:                | Store the antibody undiluted at 2-8°C for one month or (in aliquots) at -20°C for longer.<br>Avoid repeated freezing and thawing.  |
| Stability:              | Shelf life: one year from despatch.  |
| Predicted Protein Size: | 65 kDa   |
| Gene Name:              | coactivator associated arginine methyltransferase 1  |
| Database Link:          | <a href="#">Entrez Gene 10498 Human Q86X55</a>   |



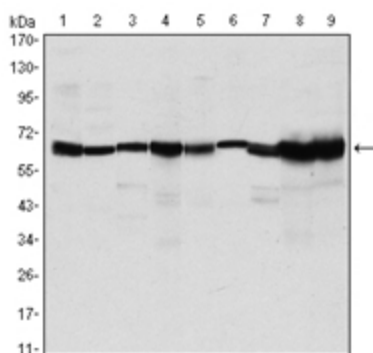
[View online »](#)

**Background:**

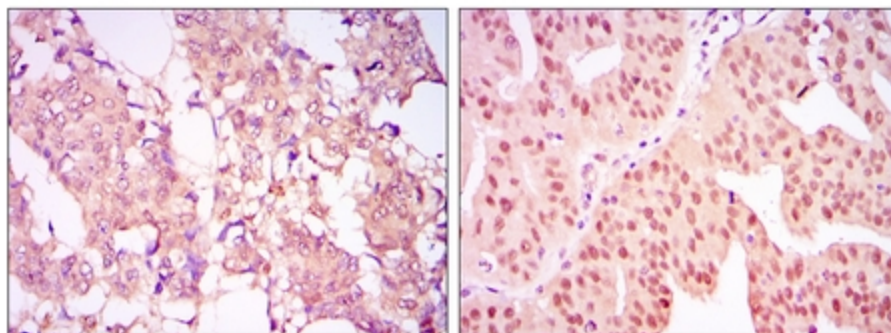
Protein arginine N-methyltransferases, such as CARM1, catalyze the transfer of a methyl group from S-adenosyl-L-methionine to the side chain nitrogens of arginine residues within proteins to form methylated arginine derivatives and S-adenosyl-L-homocysteine. Protein arginine methylation has been implicated in signal transduction, metabolism of nascent pre-RNA, and transcriptional activation (Frankel et al. 2002 (PubMed 11724789)). Tissue specificity: Overexpressed in prostate adenocarcinomas and high-grade prostatic intraepithelial neoplasia.

**Synonyms:**

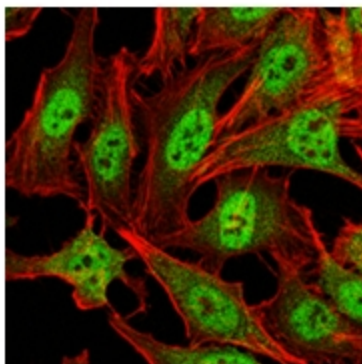
PRMT4

**Product images:**


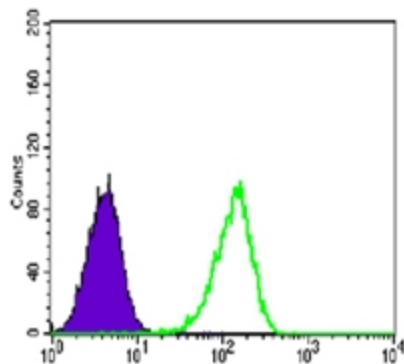
Western blot analysis using CARM1 antibody Cat.-No AM06565SU-N against MCF-7 (1), HeLa (2), NIH/3T3 (3), HL-60 (4), LNCap (5), Jurkat (6), PC-3 (7), Cos7 (8), and PC-12 (9) cell lysate.



Immunohistochemical analysis of paraffin-embedded breast cancer tissues (left) and ovarian cancer tissues (right) using CARM1 antibody Cat.-No AM06565SU-N with DAB staining.



Immunofluorescence analysis of HeLa cells using CARM1 antibody Cat.-No AM06565SU-N (green). Red: Actin filaments have been labeled with Alexa Fluor-555 phalloidin.



Flow Cytometric analysis of Lovo cells using CARM1 antibody Cat.-No AM06565SU-N (green) and negative control (purple).