

## Product datasheet for **AM06563SU-N**

### GLP1 (GCG) Mouse Monoclonal Antibody [Clone ID: 2F9]

#### Product data:

Product Type:	Primary Antibodies
Clone Name:	2F9
Applications:	ELISA, WB
Recommended Dilution:	<b>ELISA:</b> 1/10000. <b>Western Blot:</b> 1/500 - 1/2000.
Reactivity:	Human
Host:	Mouse
Isotype:	IgG1
Clonality:	Monoclonal
Immunogen:	Purified recombinant fragment of Human GCG expressed in E. Coli.
Specificity:	Recognizes Glucagon (GCG)
Formulation:	State: Ascites State: Ascitic fluid containing 0.03% Sodium Azide.
Conjugation:	Unconjugated
Storage:	Store the antibody undiluted at 2-8°C for one month or (in aliquots) at -20°C for longer. Avoid repeated freezing and thawing.
Stability:	Shelf life: one year from despatch.
Predicted Protein Size:	21 kDa
Gene Name:	glucagon
Database Link:	<a href="#">Entrez Gene 2641 Human P01275</a>



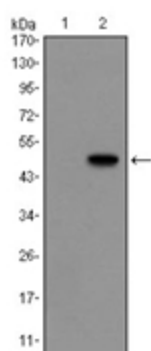
[View online »](#)

**Background:**

The protein encoded by this gene is actually a preproprotein that is cleaved into four distinct mature peptides. One of these, glucagon, is a pancreatic hormone that counteracts the glucose-lowering action of insulin by stimulating glycogenolysis and gluconeogenesis. Glucagon is a ligand for a specific G-protein linked receptor whose signalling pathway controls cell proliferation. Two of the other peptides are secreted from gut endocrine cells and promote nutrient absorption through distinct mechanisms. Finally, the fourth peptide is similar to glicentin, an active enteroglucagon. Tissue specificity: Glucagon is secreted in the A cells of the islets of Langerhans. GLP-1, GLP-2, oxyntomodulin and glicentin are secreted from enteroendocrine cells throughout the gastrointestinal tract. GLP1 and GLP2 are also secreted in selected neurons in the brain.

**Synonyms:**

GCG

**Product images:**

Western blot analysis using GCG antibody Cat.-No AM06563SU-N against HEK293 (1) and GCG (AA: 1-180)-hIgGFc transfected HEK293 (2) cell lysate.