

## Product datasheet for **AM06561SU-N**

### CTCF Mouse Monoclonal Antibody [Clone ID: 1D11]

#### Product data:

Product Type:	Primary Antibodies
Clone Name:	1D11
Applications:	ELISA, WB
Recommended Dilution:	<b>ELISA:</b> 1/10000. <b>Western Blot:</b> 1/500 - 1/2000.
Reactivity:	Human, Monkey
Host:	Mouse
Isotype:	IgG1
Clonality:	Monoclonal
Immunogen:	Purified recombinant fragment of Human CTCF expressed in E. Coli.
Specificity:	Recognizes CTCF
Formulation:	State: Ascites State: Ascitic fluid containing 0.03% Sodium Azide.
Conjugation:	Unconjugated
Storage:	Store the antibody undiluted at 2-8°C for one month or (in aliquots) at -20°C for longer. Avoid repeated freezing and thawing.
Stability:	Shelf life: one year from despatch.
Predicted Protein Size:	83 kDa
Gene Name:	CCCTC-binding factor
Database Link:	<a href="#">Entrez Gene 10664 Human P49711</a>



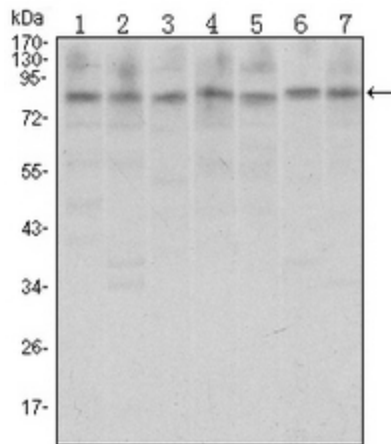
[View online »](#)

**Background:**

This gene is a member of the BORIS + CTCF gene family and encodes a transcriptional regulator protein with 11 highly conserved zinc finger (ZF) domains. This nuclear protein is able to use different combinations of the ZF domains to bind different DNA target sequences and proteins. Depending upon the context of the site, the protein can bind a histone acetyltransferase (HAT)-containing complex and function as a transcriptional activator or bind a histone deacetylase (HDAC)-containing complex and function as a transcriptional repressor. If the protein is bound to a transcriptional insulator element, it can block communication between enhancers and upstream promoters, thereby regulating imprinted expression. Mutations in this gene have been associated with invasive breast cancers, prostate cancers, and Wilms' tumors. Tissue specificity: Ubiquitous. Absent in primary spermatocytes.

**Synonyms:**

CCCTC-binding factor, CTCFL paralog

**Product images:**

Western blot analysis using CTCF antibody Cat.-No AM06561SU-N against A31 (1), MCF-7 (2), HeLa (3), HCT116 (4), Jurkat (5), NIH/3T3 (6), and Cos7 (7) cell lysate.