

## Product datasheet for **AM06557SU-N**

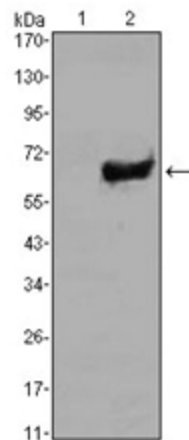
### Sox2 Mouse Monoclonal Antibody [Clone ID: 10F10]

#### Product data:

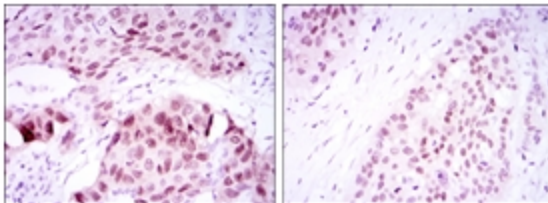
Product Type:	Primary Antibodies
Clone Name:	10F10
Applications:	ELISA, IF, IHC, WB
Recommended Dilution:	<b>ELISA:</b> 1/10000. <b>Western Blot:</b> 1/500 - 1/2000. <b>Immunofluorescence:</b> 1/200 - 1/1000. <b>Immunohistochemistry on Paraffin Sections:</b> 1/200 - 1/1000.
Reactivity:	Human
Host:	Mouse
Isotype:	IgG1
Clonality:	Monoclonal
Immunogen:	Purified recombinant fragment of Human SOX2 expressed in E. Coli.
Specificity:	Recognizes SOX2
Formulation:	State: Ascites State: Ascitic fluid containing 0.03% Sodium Azide.
Conjugation:	Unconjugated
Storage:	Store the antibody undiluted at 2-8°C for one month or (in aliquots) at -20°C for longer. Avoid repeated freezing and thawing.
Stability:	Shelf life: one year from despatch.
Predicted Protein Size:	34 kDa
Gene Name:	SRY (sex determining region Y)-box 2
Database Link:	<a href="#">P48432</a>
Background:	Transcription factor that forms a trimeric complex with OCT4 on DNA and controls the expression of a number of genes involved in embryonic development such as YES1, FGF4, UTF1 and ZFP206. Critical for early embryogenesis and for embryonic stem cell pluripotency.
Synonyms:	Transcription factor SOX-2, ANOP3, MCOPS3, SRY-box 2



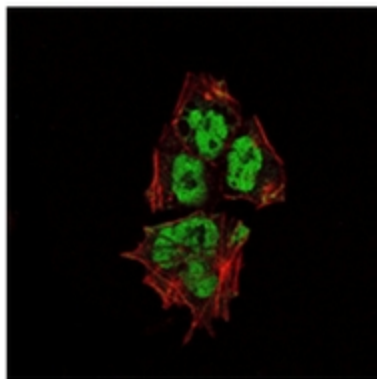
[View online »](#)

**Product images:**

Western blot analysis using SOX2 antibody Cat.-No AM06557SU-N against HEK293 (1) and SOX2 (AA: 2-317)-hIgGFc transfected HEK293 (2) cell lysate.



Immunohistochemical analysis of paraffin-embedded lung cancer tissues (left) and esophageal cancer tissues (right) using SOX2 antibody Cat.-No AM06557SU-N with DAB staining.



Immunofluorescence analysis of NTERA-2 cells using SOX2 antibody Cat.-No AM06557SU-N (green). Red: Actin filaments have been labeled with Alexa Fluor-555 phalloidin.