

Product datasheet for **AM06555SU-N**

SUZ12 Mouse Monoclonal Antibody [Clone ID: 3D10]

Product data:

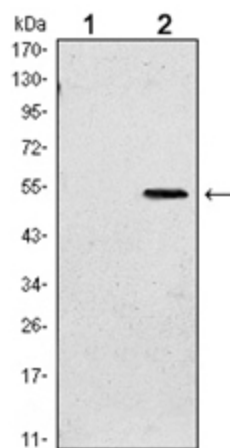
Product Type:	Primary Antibodies
Clone Name:	3D10
Applications:	ELISA, IHC, WB
Recommended Dilution:	ELISA: 1/10000. Western Blot: 1/500 - 1/2000. Immunohistochemistry: 1/200 - 1/1000.
Reactivity:	Human
Host:	Mouse
Isotype:	IgG1
Clonality:	Monoclonal
Immunogen:	Purified recombinant fragment of Human SUZ12 expressed in E. Coli.
Specificity:	Recognizes SUZ12
Formulation:	State: Ascites State: Ascitic fluid containing 0.03% Sodium Azide.
Conjugation:	Unconjugated
Storage:	Store the antibody undiluted at 2-8°C for one month or (in aliquots) at -20°C for longer. Avoid repeated freezing and thawing.
Stability:	Shelf life: one year from despatch.
Predicted Protein Size:	83.1 kDa
Gene Name:	SUZ12 polycomb repressive complex 2 subunit
Database Link:	Entrez Gene 23512 Human Q15022
Background:	This zinc finger gene has been identified at the breakpoints of a recurrent chromosomal translocation reported in endometrial stromal sarcoma. Recombination of these breakpoints results in the fusion of this gene and JAZF1. The protein encoded by this gene contains a zinc finger domain in the C terminus of the coding region. (Provided by RefSeq) SUZ12 is overexpressed in several human tumors, including tumors of the colon, breast and liver. Tissue specificity: Overexpressed in breast and colon cancer.



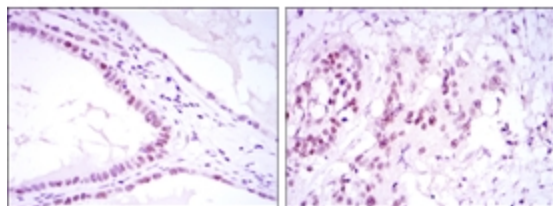
[View online »](#)

Synonyms: CHET9, JAZ1, KIAA0160

Product images:



Western blot analysis using SUZ12 antibody Cat.-No AM06555SU-N against HEK293 (1) and SUZ12 (AA: 533-739)-hlgGfc transfected HEK293 (2) cell lysate.



Immunohistochemical analysis of paraffin-embedded kidney convoluted tubule tissues (left) and esophageal cancer tissues (right) using SUZ12 antibody Cat.-No AM06555SU-N with DAB staining.