

Product datasheet for **AM06546SU-N**

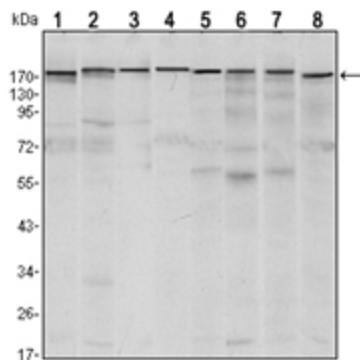
SETDB1 Mouse Monoclonal Antibody [Clone ID: 5H6A12]

Product data:

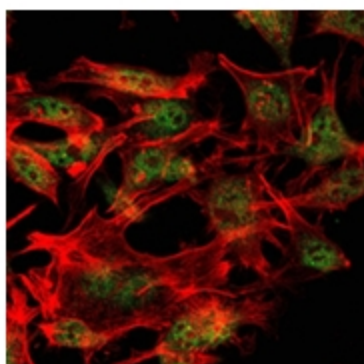
Product Type:	Primary Antibodies
Clone Name:	5H6A12
Applications:	ELISA, IF, WB
Recommended Dilution:	ELISA: 1/10000. Western Blot: 1/500 - 1/2000. Immunofluorescence: 1/200 - 1/1000.
Reactivity:	Human, Monkey, Mouse
Host:	Mouse
Isotype:	IgG1
Clonality:	Monoclonal
Immunogen:	Purified recombinant fragment of Human SETDB1 expressed in E. Coli.
Specificity:	Recognizes SETDB1
Formulation:	State: Ascites State: Ascitic fluid containing 0.03% Sodium Azide.
Conjugation:	Unconjugated
Storage:	Store the antibody undiluted at 2-8°C for one month or (in aliquots) at -20°C for longer. Avoid repeated freezing and thawing.
Stability:	Shelf life: one year from despatch.
Predicted Protein Size:	180 kDa
Gene Name:	SET domain bifurcated 1
Database Link:	Entrez Gene 9869 Human Q15047
Background:	This gene encodes a histone methyltransferase. The encoded enzyme catalyzes the reaction of S-adenosyl-L-methionine and histone L-lysine to produce S-adenosyl-L-homocysteine and histone N(6)-methyl-L-lysine. The encoded protein likely functions in transcriptional repression. Alternatively spliced transcript variants have been described.
Synonyms:	ESET, KMT1E, KIAA0067



[View online »](#)

Product images:

Western blot analysis using SETDB1 antibody Cat.-No AM06546SU-N against MCF-7 (1), T47D (2), HEK293 (3), JURKAT (4), NIH/3T3 (5), F9 (6), RAW246.7 (7) and Cos7 (8) cell lysate.



Immunofluorescence analysis of LOVO cells using SETDB1 antibody Cat.-No AM06546SU-N (green). Red: Actin filaments have been labeled with Alexa Fluor-555 phalloidin.