

Product datasheet for **AM06543SU-N**

IMP3 (IGF2BP3) Mouse Monoclonal Antibody [Clone ID: 8F11]

Product data:

Product Type:	Primary Antibodies
Clone Name:	8F11
Applications:	ELISA, IHC, WB
Recommended Dilution:	ELISA: 1/10000. Western Blot: 1/500-1/2000. Immunohistochemistry on Paraffin Sections: 1/200-1/1000.
Reactivity:	Human
Host:	Mouse
Isotype:	IgG1
Clonality:	Monoclonal
Immunogen:	Purified recombinant fragment of Human IGF2BP3 expressed in E. Coli.
Specificity:	Recognizes IGF2BP3 / IMP3
Formulation:	State: Ascites State: Ascitic fluid containing 0.03% Sodium Azide.
Conjugation:	Unconjugated
Storage:	Store undiluted at 2-8°C for one month or (in aliquots) at -20°C for longer. Avoid repeated freezing and thawing.
Stability:	Shelf life: one year from despatch.
Predicted Protein Size:	69 kDa
Gene Name:	insulin like growth factor 2 mRNA binding protein 3
Database Link:	Entrez Gene 10643 Human O00425



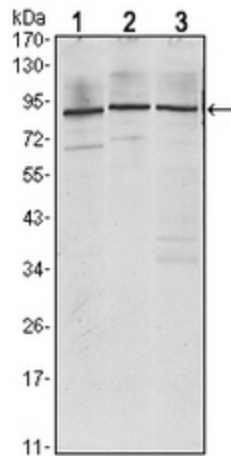
[View online »](#)

Background:

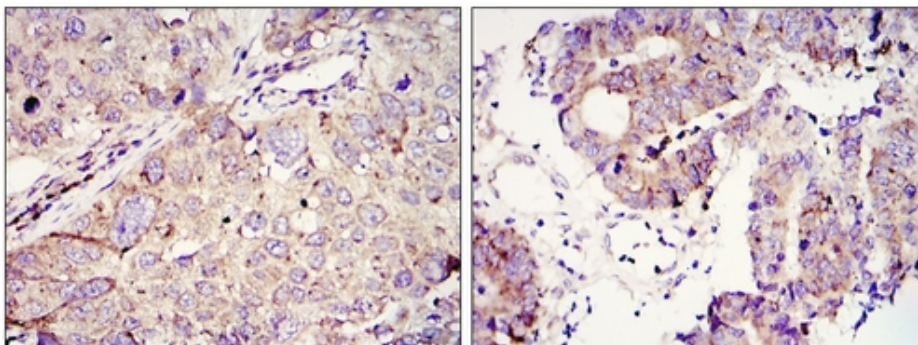
The protein encoded by this gene is primarily found in the nucleolus, where it can bind to the 5' UTR of the insulin-like growth factor II leader 3 mRNA and may repress translation of insulin-like growth factor II during late development. The encoded protein contains several KH domains, which are important in RNA binding and are known to be involved in RNA synthesis and metabolism. Tissue specificity: Expressed in fetal liver, fetal lung, fetal kidney, fetal thymus, fetal placenta, fetal follicles of ovary and gonocytes of testis, growing oocytes, spermatogonia and semen (at protein level). Expressed in cervix adenocarcinoma, in testicular, pancreatic and renal-cell carcinomas (at protein level). Expressed ubiquitously during fetal development at 8 and 14 weeks of gestation. Expressed in ovary, testis, brain, placenta, pancreatic cancer tissues and pancreatic cancer cell lines. IMP-3 is a marker for carcinomas and high-grade dysplastic lesions of pancreatic ductal epithelium.

Synonyms:

KOC1, VICKZ3

Product images:

Western blot analysis using IGF2BP3 antibody Cat.-No AM06543SU-N against Jurkat (1), K562 (2) and NTERA-2 (3) cell lysate.



Immunohistochemical analysis of paraffin-embedded lung cancer (left) and colon tumour tissues (right) using IGF2BP3 antibody Cat.-No AM06543SU-N with DAB staining.