

Product datasheet for **AM06540SU-N**

Mammaglobin A (SCGB2A2) Mouse Monoclonal Antibody [Clone ID: 3C8]

Product data:

Product Type:	Primary Antibodies
Clone Name:	3C8
Applications:	ELISA, FC, IF, IHC, WB
Recommended Dilution:	ELISA: 1/10000. Western Blot: 1/500 - 1/2000. Immunofluorescence: 1/200 - 1/1000. Flow Cytometry: 1/200 - 1/400. Immunohistochemistry on Paraffin Sections: 1/200 - 1/1000.
Reactivity:	Human
Host:	Mouse
Isotype:	IgG1
Clonality:	Monoclonal
Immunogen:	Purified recombinant fragment of Human SCGB2A2 expressed in E. Coli.
Specificity:	Recognizes SCGB2A2
Formulation:	State: Ascites State: Ascitic fluid containing 0.03% Sodium Azide.
Conjugation:	Unconjugated
Storage:	Store the antibody undiluted at 2-8°C for one month or (in aliquots) at -20°C for longer. Avoid repeated freezing and thawing.
Stability:	Shelf life: one year from despatch.
Predicted Protein Size:	11 kDa
Gene Name:	secretoglobin family 2A member 2
Database Link:	Entrez Gene 4250 Human Q13296



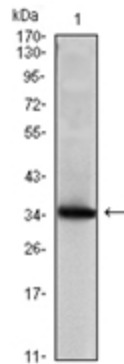
[View online »](#)

Background:

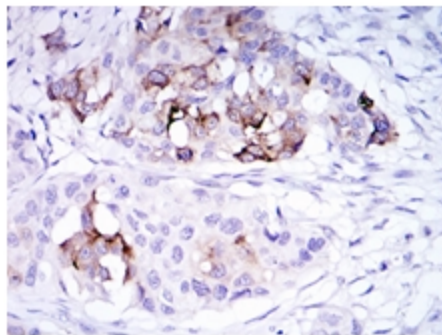
Mammaglobin is a gene that is expressed almost exclusively in the normal breast epithelium and human breast cancer. It is a member of the secretoglobulin gene family and forms a heterodimer with lipophilin B. It has been suggested that mammaglobin may be a useful marker for breast cancer clinical research. Studies investigating the detection of mRNA by RT PCR from circulating carcinoma cells in the peripheral blood of breast cancer patients have shown that mammaglobin is a highly specific marker and correlates with several prognostic factors, such as lymph node involvement. Tissue specificity: Mammary gland specific. Over-expressed in breast cancer.

Synonyms:

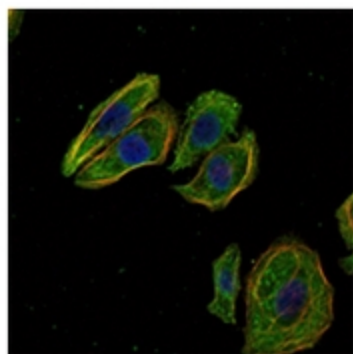
Mammaglobin-A, Mammaglobin-1, Secretoglobulin family 2A member 2, MGB1, UGB2, Prostatein peptide C3, Prostatic steroid-binding protein C3

Product images:


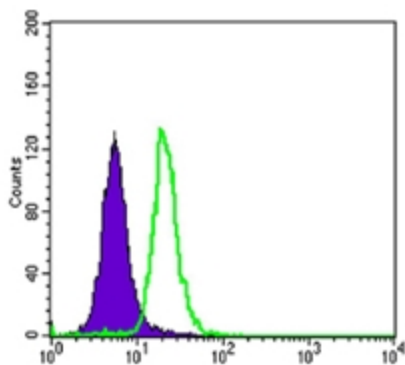
Western blot analysis using SCGB2A2 antibody Cat.-No AM06540SU-N against human SCGB2A2 (AA: 2-93) recombinant protein (Expected MW is 35.8 kDa)



Immunohistochemical analysis of paraffin-embedded mammary cancer tissues using SCGB2A2 antibody Cat.-No AM06540SU-N with DAB staining.



Immunofluorescence analysis of HeLa cells using SCGB2A2 antibody Cat.-No AM06540SU-N (green). Blue: DRAQ5 fluorescent DNA dye. Red: Actin filaments have been labeled with Alexa Fluor-555 phalloidin.



Flow cytometric analysis of SK-BR-3 cells using SCGB2A2 antibody Cat.-No AM06540SU-N (green) and negative control (purple).