

Product datasheet for **AM06538SU-N**

Cyclin B1 (CCNB1) Mouse Monoclonal Antibody [Clone ID: 5G6]

Product data:

Product Type:	Primary Antibodies
Clone Name:	5G6
Applications:	ELISA, FC, IF, WB
Recommended Dilution:	ELISA: 1/10000. Western Blot: 1/500 - 1/2000. Immunofluorescence: 1/200 - 1/1000. Flow Cytometry: 1/200 - 1/400.
Reactivity:	Human, Rat
Host:	Mouse
Isotype:	IgG1
Clonality:	Monoclonal
Immunogen:	Purified recombinant fragment of Human CCNB1 expressed in E. Coli.
Specificity:	Recognizes Cyclin B1
Formulation:	State: Ascites State: Ascitic fluid containing 0.03% Sodium Azide.
Conjugation:	Unconjugated
Storage:	Store the antibody undiluted at 2-8°C for one month or (in aliquots) at -20°C for longer. Avoid repeated freezing and thawing.
Stability:	Shelf life: one year from despatch.
Predicted Protein Size:	60 kDa
Gene Name:	cyclin B1
Database Link:	Entrez Gene 891 Human P14635



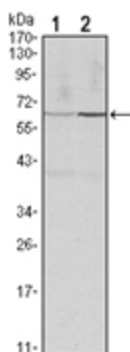
[View online »](#)

Background:

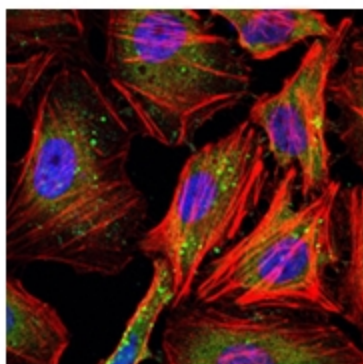
The protein encoded by this gene is a regulatory protein involved in mitosis. The gene product complexes with p34(cdc2) to form the maturation-promoting factor (MPF). Two alternative transcripts have been found, a constitutively expressed transcript and a cell cycle-regulated transcript, that is expressed predominantly during G2/M phase. The different transcripts result from the use of alternate transcription initiation sites. (provided by RefSeq) It has higher expression in tumor tissues .

Synonyms:

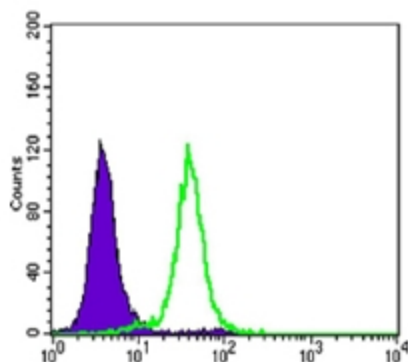
CCNB1, CCNB, Cyclin-B1

Product images:


Western blot analysis using Cyclin B1 antibody Cat.-No AM06538SU-N against HeLa (1) and PC-12 (2) cell lysate.



Immunofluorescence analysis of HeLa cells using Cyclin B1 antibody Cat.-No AM06538SU-N (green). Blue: DRAQ5 fluorescent DNA dye. Red: Actin filaments have been labeled with Alexa Fluor-555 phalloidin.



Flow Cytometric analysis of HeLa cells using Cyclin B1 antibody Cat.-No AM06538SU-N (green) and negative control (purple).