

Product datasheet for **AM06535SU-N**

E Cadherin (CDH1) Mouse Monoclonal Antibody [Clone ID: 7H12]

Product data:

Product Type:	Primary Antibodies
Clone Name:	7H12
Applications:	ELISA, FC, IHC, WB
Recommended Dilution:	ELISA: 1/10000. Western Blot: 1/500 - 1/2000. Flow Cytometry: 1/200 - 1/400. Immunohistochemistry on Paraffin Sections: 1/200 - 1/1000.
Reactivity:	Human, Monkey, Mouse
Host:	Mouse
Isotype:	IgG1
Clonality:	Monoclonal
Immunogen:	Purified recombinant fragment of Human CDH1 expressed in E. Coli.
Specificity:	Recognizes CDH1 (CD324 / Cadherin-1).
Formulation:	State: Ascites State: Ascitic fluid containing 0.03% Sodium Azide.
Conjugation:	Unconjugated
Storage:	Store the antibody undiluted at 2-8°C for one month or (in aliquots) at -20°C for longer. Avoid repeated freezing and thawing.
Stability:	Shelf life: one year from despatch.
Predicted Protein Size:	135 kDa
Gene Name:	cadherin 1
Database Link:	Entrez Gene 999 Human P12830



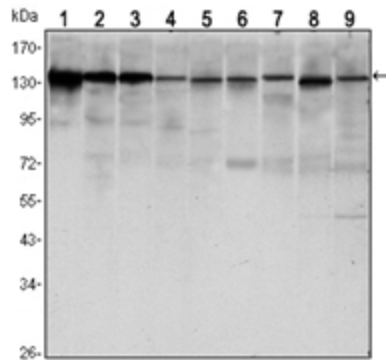
[View online »](#)

Background:

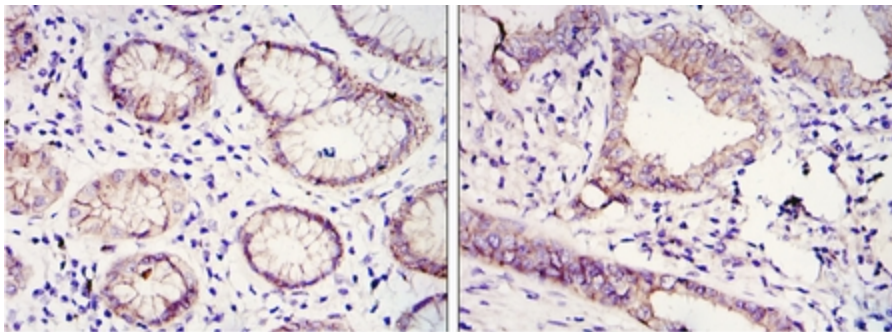
E-Cadherin is a 120 kDa transmembrane glycoprotein that is localized in the adherens junctions of epithelial cells. There, it interacts with the cytoskeleton through the associated cytoplasmic catenin proteins. In addition to being a calcium-dependent adhesion molecule, E-Cadherin is also a critical regulator of epithelial junction formation. Its association with catenins is necessary for cell-cell adhesion. These E-cadherin/catenin complexes associate with cortical actin bundles at both the zonula adherens and the lateral adhesion plaques. Tyrosine phosphorylation can disrupt these complexes, leading to changes in cell adhesion properties. E-Cadherin expression is often down-regulated in highly invasive, poorly differentiated carcinomas. Increased expression of E-Cadherin in these cells reduces invasiveness. Thus, loss of expression or function of E-Cadherin appears to be an important step in tumorigenic progression. Tissue specificity: Non-neural epithelial tissues.

Synonyms:

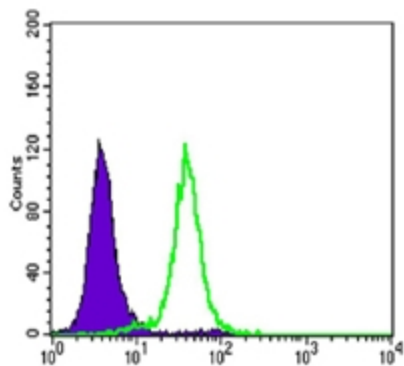
Epithelial cadherin, E-cadherin, Uvomorulin, CAM 120/80, CDH1, CDHE, UVO

Product images:


Western blot analysis using CDH1 antibody Cat.-No AM06535SU-N against LNCAP (1)A431 (2), DU145 (3), PC-3 (4), MCF-7 (5), PC-12 (6), NIH/3T3 (7), C6 (8) and COS7 (9) cell lysate.



Immunohistochemical analysis of paraffin-embedded gastric cancer tissues (left) and lung cancer tissues (right) using CDH1 antibody Cat.-No AM06535SU-N with DAB staining.



Flow cytometric analysis of HeLa cells using CDH1 antibody Cat.-No AM06535SU-N (green) and negative control (purple).