

## Product datasheet for **AM06528SU-N**

### **MAT1A Mouse Monoclonal Antibody [Clone ID: 5A8]**

#### **Product data:**

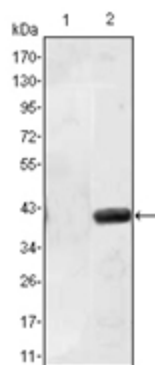
Product Type:	Primary Antibodies
Clone Name:	5A8
Applications:	ELISA, IF, WB
Recommended Dilution:	<b>ELISA:</b> 1/10000. <b>Western Blot:</b> 1/500 - 1/2000. <b>Immunofluorescence:</b> 1/200 - 1/1000.
Reactivity:	Human
Host:	Mouse
Isotype:	IgG1
Clonality:	Monoclonal
Immunogen:	Purified recombinant fragment of Human MATN1 expressed in E. Coli.
Specificity:	Recognizes MAT1A
Formulation:	State: Ascites State: Ascitic fluid containing 0.03% Sodium Azide.
Conjugation:	Unconjugated
Storage:	Store the antibody undiluted at 2-8°C for one month or (in aliquots) at -20°C for longer. Avoid repeated freezing and thawing.
Stability:	Shelf life: one year from despatch.
Predicted Protein Size:	54 kDa
Gene Name:	methionine adenosyltransferase 1A
Database Link:	<a href="#">Entrez Gene 4143 Human</a> <a href="#">Q00266</a>
Background:	This gene catalyzes a two-step reaction that involves the transfer of the adenosyl moiety of ATP to methionine to form S-adenosylmethionine and triphosphosphate, which is subsequently cleaved to PPI and Pi. S-adenosylmethionine is the source of methyl groups for most biological methylations. The encoded protein is found as a homotetramer (MAT I) or a homodimer (MAT III) whereas a third form, MAT II (gamma), is encoded by the MAT2A gene. Mutations in this gene are associated with methionine adenosyltransferase deficiency.



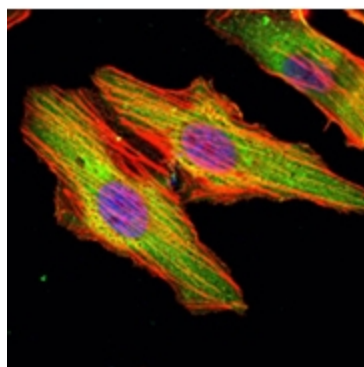
[View online »](#)

Synonyms: AdoMet synthetase 1, MAT 1, MATA1, AMS1, MAT-I/III

### Product images:



Western blot analysis using MATN1 antibody Cat.-No AM06528SU-N against HEK293 (1) and MATN1 (AA: 427-496)-hlgGFc transfected HEK293 (2) cell lysate.



Immunofluorescence analysis of HeLa cells using MATN1 antibody Cat.-No AM06528SU-N (green). Blue: DRAQ5 fluorescent DNA dye. Red: Actin filaments have been labeled with Alexa Fluor-555 phalloidin.