

## Product datasheet for **AM06523SU-N**

### WIF1 Mouse Monoclonal Antibody [Clone ID: 1G5]

#### Product data:

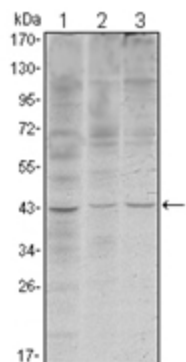
|                         |   |
|-------------------------|---|
| Product Type:           | Primary Antibodies  |
| Clone Name:             | 1G5   |
| Applications:           | ELISA, IF, IHC, WB  |
| Recommended Dilution:   | <b>ELISA:</b> 1/10000.<br><b>Western Blot:</b> 1/500 - 1/2000.<br><b>Immunofluorescence:</b> 1/200 - 1/1000.<br><b>Immunohistochemistry on Paraffin Sections:</b> 1/200 - 1/1000.   |
| Reactivity:             | Human   |
| Host:                   | Mouse   |
| Isotype:                | IgG1  |
| Clonality:              | Monoclonal  |
| Immunogen:              | Purified recombinant fragment of Human WIF1 expressed in E. Coli.   |
| Specificity:            | recognizes WIF1   |
| Formulation:            | State: Ascites<br>State: Ascitic fluid containing 0.03% Sodium Azide.   |
| Conjugation:            | Unconjugated  |
| Storage:                | Store the antibody undiluted at 2-8°C for one month or (in aliquots) at -20°C for longer.<br>Avoid repeated freezing and thawing.   |
| Stability:              | Shelf life: one year from despatch.   |
| Predicted Protein Size: | 42 kDa  |
| Gene Name:              | WNT inhibitory factor 1   |
| Database Link:          | <a href="#">Entrez Gene 11197 Human Q9Y5W5</a>  |
| Background:             | The protein encoded by this gene functions to inhibit WNT proteins, which are extracellular signaling molecules that play a role in embryonic development. This protein contains a WNT inhibitory factor (WIF) domain and five epidermal growth factor (EGF)-like domains, and is thought to be involved in mesoderm segmentation. This gene functions as a tumor suppressor gene, and has been found to be epigenetically silenced in various cancers. |



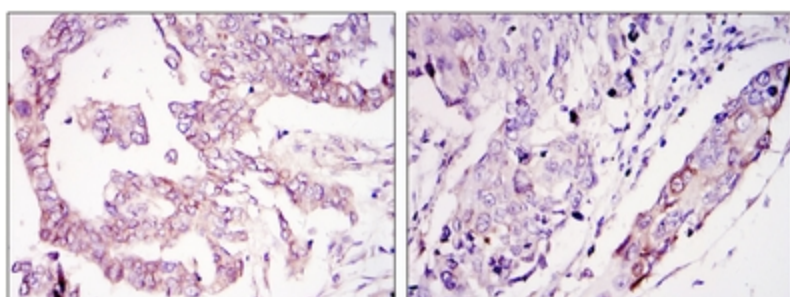
[View online »](#)

Synonyms: WIF-1, UNQ191/PRO217

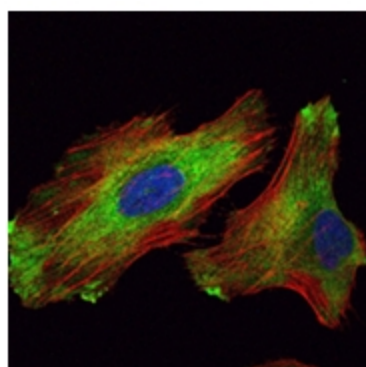
**Product images:**



Western blot analysis using WIF1 antibody Cat.-No AM06523SU-N against HeLa (1), NIH/3T3 (2) and NTERA-2 (3) cell lysate.



Immunohistochemical analysis of paraffin-embedded ovary tumour tissues (left) and lung cancer (right) using WIF1 antibody Cat.-No AM06523SU-N with DAB staining.



Immunofluorescence analysis of HeLa cells using WIF1 antibody Cat.-No AM06523SU-N (green). Red: Actin filaments have been labeled with Alexa Fluor-555 phalloidin.