

Product datasheet for **AM06522SU-N**

KLHL1 Mouse Monoclonal Antibody [Clone ID: 3A8]

Product data:

Product Type:	Primary Antibodies
Clone Name:	3A8
Applications:	ELISA, IF, WB
Recommended Dilution:	ELISA: 1/10000. Western Blot: 1/500 - 1/2000. Immunofluorescence: 1/200 - 1/1000.
Reactivity:	Human
Host:	Mouse
Isotype:	IgG1
Clonality:	Monoclonal
Immunogen:	Purified recombinant fragment of Human KLHL1 expressed in E. Coli.
Specificity:	recognizes Kelch-like 1 protein (KLHL1)
Formulation:	State: Ascites State: Ascitic fluid containing 0.03% Sodium Azide.
Conjugation:	Unconjugated
Storage:	Store the antibody undiluted at 2-8°C for one month or (in aliquots) at -20°C for longer. Avoid repeated freezing and thawing.
Stability:	Shelf life: one year from despatch.
Predicted Protein Size:	82 kDa
Gene Name:	kelch like family member 1
Database Link:	Entrez Gene 57626 Human Q9NR64



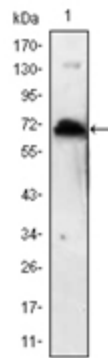
[View online »](#)

Background:

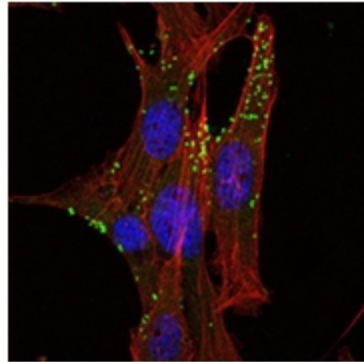
The mammalian Kelch like 1 (KLHL1) was initially discovered as a homolog to the *Drosophila* Kelch gene that is highly expressed in several brain tissues. The predicted protein domain structure of KLHL1 is characteristic of a number of proteins that bind actin, form dimers, and often act as actin organizing proteins. Based on the presence of anti sense RNA that spans the transcription and translation start sites as well as the first splice site of KLHL1 in brain tissue of individuals suffering from the neurodegenerative disorder spinocerebellar ataxia type 8 (SCA8), it has been suggested that KLHL1 is involved in this disease and that regulation of KLHL1 protein may be affected by antisense RNA expression. Tissue specificity: Highly expressed in brain.

Synonyms:

KLHL1, KIAA1490

Product images:


Western blot analysis using KLHL1 antibody Cat.-No AM06522SU-N against human KLHL1 (AA: 202-506) recombinant protein (Expected MW is 60.2 kDa).



Immunofluorescence analysis of NIH/3T3 cells using KLHL1 antibody Cat.-No AM06522SU-N (green). Red: Actin filaments have been labeled with Alexa Fluor-555 phalloidin.