

Product datasheet for **AM06521SU-N**

KLHL22 Mouse Monoclonal Antibody [Clone ID: 7B10]

Product data:

Product Type:	Primary Antibodies
Clone Name:	7B10
Applications:	ELISA, IF, WB
Recommended Dilution:	ELISA: 1/10000. Western Blot: 1/500 - 1/2000. Immunofluorescence: 1/200 - 1/1000.
Reactivity:	Human
Host:	Mouse
Isotype:	IgG1
Clonality:	Monoclonal
Immunogen:	Purified recombinant fragment of Human KLHL22 expressed in E. Coli.
Specificity:	Recognizes Kelch-like protein 22 (KLHL22)
Formulation:	State: Ascites State: Ascitic fluid containing 0.03% Sodium Azide.
Conjugation:	Unconjugated
Storage:	Store the antibody undiluted at 2-8°C for one month or (in aliquots) at -20°C for longer. Avoid repeated freezing and thawing.
Stability:	Shelf life: one year from despatch.
Predicted Protein Size:	72 kDa
Gene Name:	kelch like family member 22
Database Link:	Entrez Gene 84861 Human Q53GT1



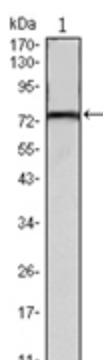
[View online »](#)

Background:

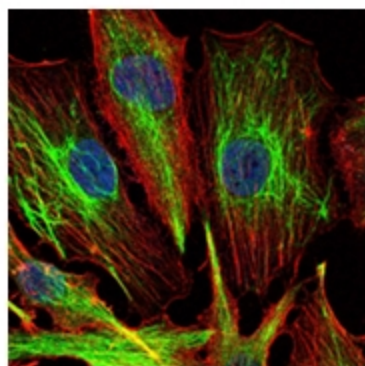
KLHL22 (kelch-like protein 22) is a 634 amino acid protein that is related to the Drosophilakelch protein, which is required to maintain Actin organization in ovarian ring canals. Mutations affecting Kelch function result in the failure of Kelch to associate with the ring canals and subsequent female sterility. Human KLHL22 protein contains six kelch repeats and one BTB (POZ) domain. The BTB (Broad-Complex, Tramtrack and Bric a brac) domain, also known as the POZ (Poxvirus and Zinc finger) domain, is an N-terminal homodimerization domain that contains multiple copies of kelch repeats and/or C2H2-type zinc fingers. Proteins that contain BTB domains are thought to be involved in transcriptional regulation via control of chromatin structure and function. There are two isoforms of KLHL22 that are produced as a result of alternative splicing events.

Synonyms:

KLHL22

Product images:


Western blot analysis using KLHL22 antibody Cat.-No AM06521SU-N against mouse brain tissues lysate.



Immunofluorescence analysis of U251 cells using KLHL22 antibody Cat.-No AM06521SU-N (green). Blue: DRAQ5 fluorescent DNA dye. Red: Actin filaments have been labeled with Alexa Fluor-555 phalloidin.