

## Product datasheet for **AM06517SU-N**

### **KLF4 Mouse Monoclonal Antibody [Clone ID: 1E6]**

#### **Product data:**

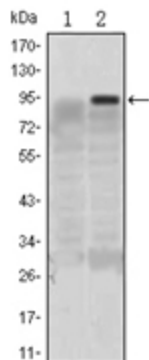
Product Type:	Primary Antibodies
Clone Name:	1E6
Applications:	ELISA, IF, IHC, WB
Recommended Dilution:	<b>ELISA:</b> 1/10000. <b>Western Blot:</b> 1/500 - 1/2000. <b>Immunofluorescence:</b> 1/200 - 1/1000. <b>Immunohistochemistry on Paraffin Sections:</b> 1/200 - 1/1000.
Reactivity:	Human
Host:	Mouse
Isotype:	IgG1
Clonality:	Monoclonal
Immunogen:	Purified recombinant fragment of Human KLF4 expressed in E. Coli.
Specificity:	Recognizes KLF4
Formulation:	State: Ascites State: Ascitic fluid containing 0.03% Sodium Azide.
Conjugation:	Unconjugated
Storage:	Store the antibody undiluted at 2-8°C for one month or (in aliquots) at -20°C for longer. Avoid repeated freezing and thawing.
Stability:	Shelf life: one year from despatch.
Predicted Protein Size:	54 kDa
Gene Name:	Kruppel-like factor 4 (gut)
Database Link:	<a href="#">Entrez Gene 9314 Human O43474</a>
Background:	Kruppel-like factor 4 (gut),endothelial Kruppel-like zinc finger protein. May act as a transcriptional activator. Binds the CACCC core sequence. May be involved in the differentiation of epithelial cells and may also function in the development of the skeleton and kidney. KLF4 is highly expressed in the epithelial cells of the skin and the gastrointestinal tract.



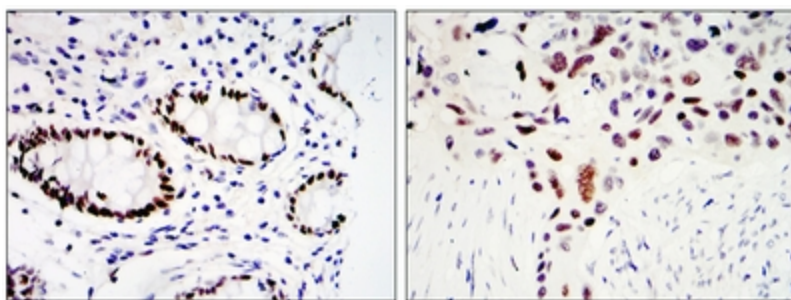
[View online »](#)

Synonyms: EZF, GKL

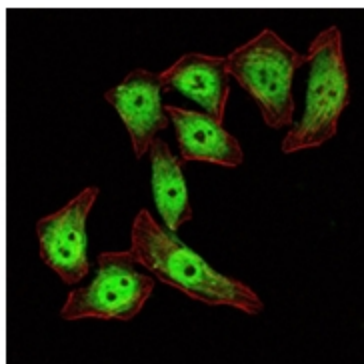
### Product images:



Western blot analysis using KLF4 antibody Cat.-No AM06517SU-N against HEK293 (1) and KLF4 (AA: 2-180)-hlgGfc transfected HEK293 (2) cell lysate.



Immunohistochemical analysis of paraffin-embedded colon cancer tissues (left) and lung cancer tissues (right) using KLF4 antibody Cat.-No AM06517SU-N with DAB staining



Immunofluorescence analysis of ECA109 cells using KLF4 antibody Cat.-No AM06517SU-N (green). Red: Actin filaments have been labeled with Alexa Fluor-555 phalloidin.