

Product datasheet for **AM06510SU-N**

Estrogen Receptor 1 (ESR1) Mouse Monoclonal Antibody [Clone ID: 6B6]

Product data:

Product Type:	Primary Antibodies
Clone Name:	6B6
Applications:	ELISA, IF, IHC, WB
Recommended Dilution:	ELISA: 1/10000. Western Blot: 1/500 - 1/2000. Immunofluorescence: 1/200 - 1/1000. Immunohistochemistry on Paraffin Sections: 1/200 - 1/1000.
Reactivity:	Human
Host:	Mouse
Isotype:	IgG1
Clonality:	Monoclonal
Immunogen:	Purified recombinant fragment of Human ESR1 expressed in E. Coli.
Specificity:	Recognizes ESR1
Formulation:	State: Ascites State: Ascitic fluid containing 0.03% Sodium Azide.
Conjugation:	Unconjugated
Storage:	Store the antibody undiluted at 2-8°C for one month or (in aliquots) at -20°C for longer. Avoid repeated freezing and thawing.
Stability:	Shelf life: one year from despatch.
Predicted Protein Size:	66 kDa
Gene Name:	estrogen receptor 1
Database Link:	Entrez Gene 2099 Human P03372



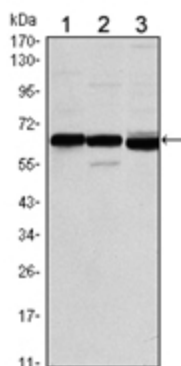
[View online »](#)

Background:

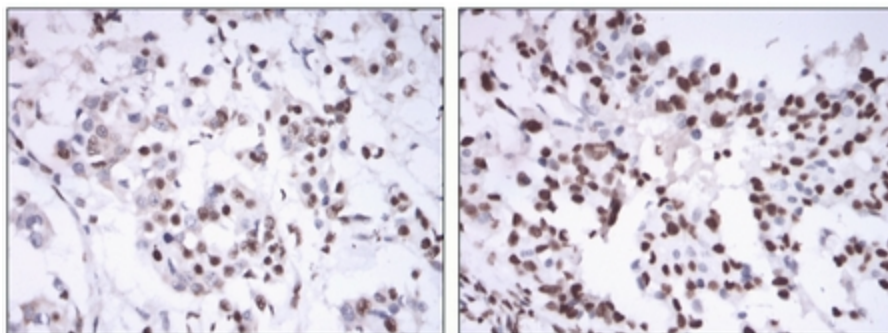
This gene encodes an estrogen receptor, a ligand-activated transcription factor composed of several domains important for hormone binding, DNA binding, and activation of transcription. The protein localizes to the nucleus where it may form a homodimer or a heterodimer with estrogen receptor 2. Estrogen and its receptors are essential for sexual development and reproductive function, but also play a role in other tissues such as bone. Estrogen receptors are also involved in pathological processes including breast cancer, endometrial cancer, and osteoporosis.

Synonyms:

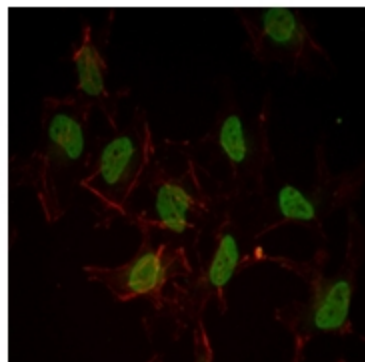
ER alpha, Estradiol receptor, ESR1, ESR, NR3A1

Product images:

Western blot analysis using ESR1 antibody Cat.-No AM06510SU-N against MCF-7 (1), T47D (2) and SKBR3 (3) cell lysate.



Immunohistochemical analysis of paraffin-embedded mammary cancer tissues using ESR1 antibody Cat.-No AM06510SU-N with DAB staining.



Immunofluorescence analysis of HeLa cells using ESR1 antibody Cat.-No AM06510SU-N (green). Red: Actin filaments have been labeled with Alexa Fluor-555 phalloidin.