

## Product datasheet for **AM06507SU-N**

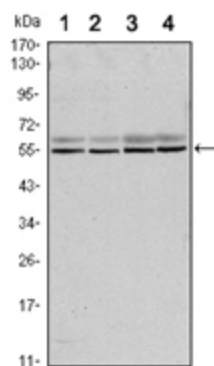
### SMAD6 Mouse Monoclonal Antibody [Clone ID: 5H3]

#### Product data:

Product Type:	Primary Antibodies
Clone Name:	5H3
Applications:	ELISA, WB
Recommended Dilution:	<b>ELISA:</b> 1/10000. <b>Western Blot:</b> 1/500 - 1/2000.
Reactivity:	Human
Host:	Mouse
Isotype:	IgG1
Clonality:	Monoclonal
Immunogen:	Purified recombinant fragment of Human SMAD6 expressed in E. Coli.
Specificity:	Recognizes SMAD6
Formulation:	State: Ascites State: Ascitic fluid containing 0.03% Sodium Azide.
Conjugation:	Unconjugated
Storage:	Store the antibody undiluted at 2-8°C for one month or (in aliquots) at -20°C for longer. Avoid repeated freezing and thawing.
Stability:	Shelf life: one year from despatch.
Predicted Protein Size:	53 kDa
Gene Name:	SMAD family member 6
Database Link:	<a href="#">Entrez Gene 4091 Human O43541</a>
Background:	Antagonist of signaling by TGF-beta (transforming growth factor) type 1 receptor superfamily members; has been shown to inhibit selectively BMP (bone morphogenetic proteins) signaling by competing with the co-SMAD SMAD4 for receptor-activated SMAD1. SMAD6 is an inhibitory SMAD (I-SMAD) or antagonistic SMAD. Binds to regulatory elements in target promoter regions. Tissue specificity: Ubiquitous in various organs, with higher levels in lung. Isoform B is up-regulated in diseased heart tissue.
Synonyms:	SMAD family member 6, SMAD 6, SMAD-6, MADH6, MAD homolog 6



[View online »](#)

**Product images:**

Western blot analysis using SMAD6 antibody Cat.-No AM06507SU-N against A431 (1), A431 (2), HeLa (3) and Jurkat (4) cell lysate.