

Product datasheet for **AM06505SU-N**

Ube1L (UBA7) Mouse Monoclonal Antibody [Clone ID: 5B10]

Product data:

Product Type:	Primary Antibodies
Clone Name:	5B10
Applications:	ELISA, WB
Recommended Dilution:	ELISA: 1/10000. Western Blot: 1/500 - 1/2000.
Reactivity:	Human
Host:	Mouse
Isotype:	IgG1
Clonality:	Monoclonal
Immunogen:	Purified recombinant fragment of Human UBE1L expressed in E. Coli.
Specificity:	Recognizes UBA7 / UBE1
Formulation:	State: Ascites State: Ascitic fluid containing 0.03% Sodium Azide.
Conjugation:	Unconjugated
Storage:	Store the antibody undiluted at 2-8°C for one month or (in aliquots) at -20°C for longer. Avoid repeated freezing and thawing.
Stability:	Shelf life: one year from despatch.
Predicted Protein Size:	112 kDa
Gene Name:	ubiquitin like modifier activating enzyme 7
Database Link:	Entrez Gene 7318 Human P41226



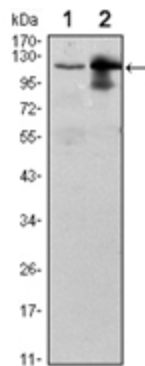
[View online »](#)

Background:

The modification of proteins with ubiquitin is an important cellular mechanism for targeting. Tissue specificity: Expressed in a variety of normal and tumor cell types, but is reduced in lung cancer cell lines abnormal or short-lived proteins for degradation. Ubiquitination involves at least three classes of enzymes: ubiquitin-activating enzymes, or E1s, ubiquitin-conjugating enzymes, or E2s, and ubiquitin-protein ligases, or E3s. This gene encodes a member of the E1 ubiquitin-activating enzyme family. The encoded enzyme is a retinoid target that triggers promyelocytic leukemia (PML)/retinoic acid receptor alpha (RARalpha) degradation and apoptosis in acute promyelocytic leukemia, where it is involved in the conjugation of the ubiquitin-like interferon-stimulated gene 15 protein.

Synonyms:

Ubiquitin-activating enzyme 7, UBE2

Product images:

Western blot analysis using UBE1L antibody Cat.-No AM06505SU-N against Raji (1) and THP-1 (2) cell lysate.