

Product datasheet for **AM06503SU-N**

RAB25 Mouse Monoclonal Antibody [Clone ID: 3F12]

Product data:

Product Type:	Primary Antibodies
Clone Name:	3F12
Applications:	ELISA, FC, IF, IHC, WB
Recommended Dilution:	ELISA: 1/10000. Western Blot: 1/500 - 1/2000. Immunofluorescence: 1/200 - 1/1000. Flow Cytometry: 1/200 - 1/400. Immunohistochemistry on Paraffin Sections: 1/200 - 1/1000.
Reactivity:	Human, Mouse
Host:	Mouse
Isotype:	IgG1
Clonality:	Monoclonal
Immunogen:	Purified recombinant fragment of Rab25 expressed in E. Coli.
Specificity:	Recognizes RAB25
Formulation:	State: Ascites State: Ascitic fluid containing 0.03% Sodium Azide.
Conjugation:	Unconjugated
Storage:	Store the antibody undiluted at 2-8°C for one month or (in aliquots) at -20°C for longer. Avoid repeated freezing and thawing.
Stability:	Shelf life: one year from despatch.
Predicted Protein Size:	24 kDa
Gene Name:	RAB25, member RAS oncogene family
Database Link:	Entrez Gene 57111 Human P57735



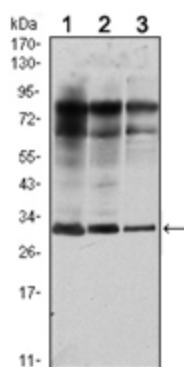
[View online »](#)

Background:

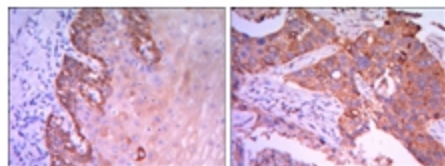
Members of the Ras-related superfamily of GTP binding proteins, which includes Ras, Rho, Rab and ARF subfamilies, exhibit 30-50% similarity with Ras p21. Rab proteins play an important role for either in endocytosis or in biosynthetic protein transport. The possibility that Rab proteins might also direct the exocytosis from secretory vesicles to the plasma membrane is supported by the observation that in yeast, the SEC4 protein, which is 40% similar to Rab proteins, is associated with secretory vesicles. Rab proteins located on the cytoplasmic face of organelles and vesicles, rab proteins are involved in intracellular membrane fusion reactions. Rab25 was cloned from a gastric parietal cell cDNA library and is expressed in epithelial tissues such as the gastrointestinal mucosae, kidney, and lung, which encoded a protein of 28 kDa.

Synonyms:

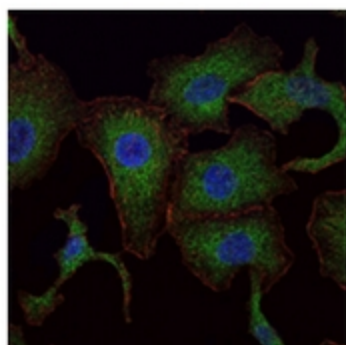
Rab-25, CATX8, CATX-8

Product images:


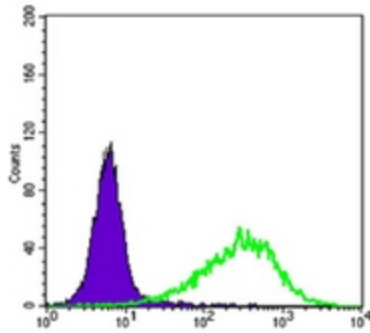
Western blot analysis using Rab25 antibody Cat.-No AM06503SU-N against MCF-7 (1), T47D (2) and GC7901 (3) cell lysate.



Immunohistochemical analysis of paraffin-embedded esophagus tissues (left) and human lung cancer (right) using Rab25 antibody Cat.-No AM06503SU-N with DAB staining.



Immunofluorescence analysis of A549 cells using RAB25 antibody Cat.-No AM06503SU-N (green). Blue: DRAQ5 fluorescent DNA dye. Red: Actin filaments have been labeled with Alexa Fluor-555 phalloidin.



Flow cytometric analysis of NIH/3T3 cells using Rab25 antibody Cat.-No AM06503SU-N (green) and negative control (purple).