

Product datasheet for **AM06500SU-N**

ABL2 Mouse Monoclonal Antibody [Clone ID: 1H1]

Product data:

Product Type:	Primary Antibodies
Clone Name:	1H1
Applications:	ELISA, IF, WB
Recommended Dilution:	ELISA: 1/10000. Western Blot: 1/500 - 1/2000. Immunofluorescence: 1/200 - 1/1000.
Reactivity:	Human, Mouse
Host:	Mouse
Isotype:	IgG1
Clonality:	Monoclonal
Immunogen:	Purified recombinant fragment of ABL2 expressed in E. Coli.
Specificity:	Recognizes ABL2
Formulation:	State: Ascites State: Ascitic fluid containing 0.03% Sodium Azide.
Conjugation:	Unconjugated
Storage:	Store the antibody undiluted at 2-8°C for one month or (in aliquots) at -20°C for longer. Avoid repeated freezing and thawing.
Stability:	Shelf life: one year from despatch.
Predicted Protein Size:	128 kDa
Gene Name:	ABL proto-oncogene 2, non-receptor tyrosine kinase
Database Link:	Entrez Gene 27 Human P42684



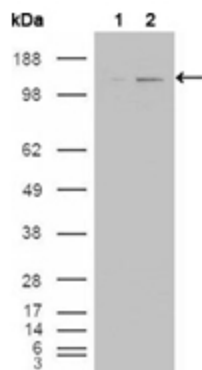
[View online »](#)

Background:

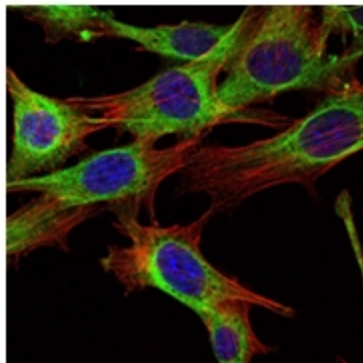
ABL2 (ARG, Abl-related gene), together with c-Abl, forms the Abl family of mammalian non-receptor tyrosine kinases. ABL2 and c-Abl share 89%, 90 and 93% identity in their SH3, SH2 and tyrosine domain, but only 29% identity in the carboxy-terminal half. The human c-Abl and ABL2 genes are expressed ubiquitously. ABL2 had been detected predominantly in the cytoplasm, whereas c-Abl shows both cytoplasmic and nuclear localization. c-Abl is involved in two different chromosomal translocations present in human leukemias, which generate Bcr-Abl and TEL-Abl. Recently, TEL-ARG fusion transcripts have also been identified in acute myeloid leukemias (AML). The Abl family kinases may also interact with receptor tyrosine signaling pathways and regulate cellular function such as cell cycle progression, gene transcription and organization of the actin cytoskeletons in neurons.

Synonyms:

ABLL, ARG

Product images:


Western blot analysis using ABL2 antibody Cat.-No AM06500SU-N against HEK293T cells transfected with the pCMV6-ENTRY control (1) and pCMV6-ENTRY ABL2 cDNA (2).



Immunofluorescence analysis of NIH/3T3 cells using ABL2 antibody Cat.-No AM06500SU-N (green). Blue: DRAQ5 fluorescent DNA dye. Red: Actin filaments have been labeled with Alexa Fluor-555 phalloidin.