

Product datasheet for **AM06496SU-N**

KDM4A Mouse Monoclonal Antibody [Clone ID: 5H1]

Product data:

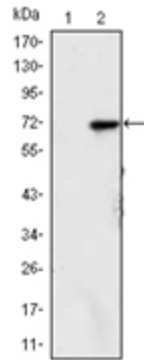
Product Type:	Primary Antibodies
Clone Name:	5H1
Applications:	ELISA, IF, IHC, WB
Recommended Dilution:	ELISA: 1/10000. Western Blot: 1/500 - 1/2000. Immunofluorescence: 1/200 - 1/1000. Immunohistochemistry on Paraffin Sections: 1/200 - 1/1000.
Reactivity:	Human
Host:	Mouse
Isotype:	IgG1
Clonality:	Monoclonal
Immunogen:	Purified recombinant fragment of Human KDM4A expressed in E. Coli.
Specificity:	Recognizes Jumonji Domain 2 (JMJD2).
Formulation:	State: Ascites State: Ascitic fluid containing 0.03% Sodium Azide.
Conjugation:	Unconjugated
Storage:	Store the antibody undiluted at 2-8°C for one month or (in aliquots) at -20°C for longer. Avoid repeated freezing and thawing.
Stability:	Shelf life: one year from despatch.
Predicted Protein Size:	120 kDa
Gene Name:	lysine demethylase 4A
Database Link:	Entrez Gene 9682 Human O75164
Background:	This gene is a member of the Jumonji domain 2 (JMJD2) family and encodes a protein containing a JmjN domain, a JmjC domain, a JD2H domain, two TUDOR domains, and two PHD-type zinc fingers. This nuclear protein functions as a trimethylation-specific demethylase, converting specific trimethylated histone residues to the dimethylated form, and as a transcriptional repressor.



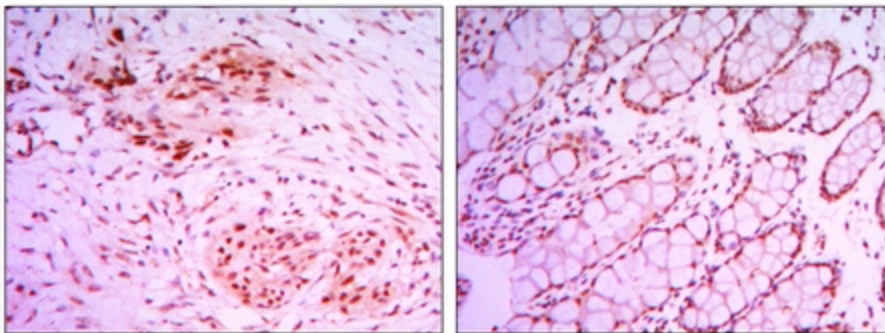
[View online »](#)

Synonyms: JHDM3A, JMJD2, KIAA0677

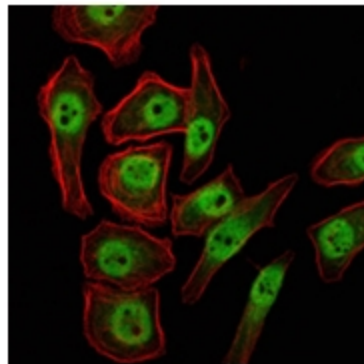
Product images:



Western blot analysis using KDM4A antibody Cat.-No AM06496SU-N against HEK293 (1) and KDM4A (AA: 500-705)-hlgGFc transfected HEK293 (2) cell lysate.



Immunohistochemical analysis of paraffin-embedded colon cancer tissues (left) and human larynx cancer tissues (right) using KDM4A antibody Cat.-No AM06496SU-N with DAB staining.



Immunofluorescence analysis of NTERA-2 cells using KDM4A antibody Cat.-No AM06496SU-N (green). Red: Actin filaments have been labeled with Alexa Fluor-555 phalloidin.