

Product datasheet for **AM06494SU-N**

Parathyroid Hormone Receptor 1 (PTH1R) Mouse Monoclonal Antibody [Clone ID: 4D2]

Product data:

Product Type:	Primary Antibodies
Clone Name:	4D2
Applications:	ELISA, IF, IHC, WB
Recommended Dilution:	ELISA: 1/10000. Western Blot: 1/500 - 1/2000. Immunofluorescence: 1/200 - 1/1000. Immunohistochemistry on Paraffin Sections: 1/200 - 1/1000.
Reactivity:	Human
Host:	Mouse
Isotype:	IgG1
Clonality:	Monoclonal
Immunogen:	Purified recombinant fragment of Human PTH1R expressed in E. Coli.
Specificity:	Recognizes PTH Receptor 1
Formulation:	State: Ascites State: Ascitic fluid containing 0.03% Sodium Azide.
Conjugation:	Unconjugated
Storage:	Store the antibody undiluted at 2-8°C for one month or (in aliquots) at -20°C for longer. Avoid repeated freezing and thawing.
Stability:	Shelf life: one year from despatch.
Predicted Protein Size:	66 kDa
Gene Name:	parathyroid hormone 1 receptor
Database Link:	Entrez Gene 5745 Human Q03431



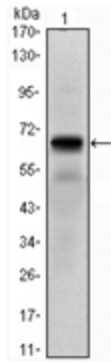
[View online »](#)

Background:

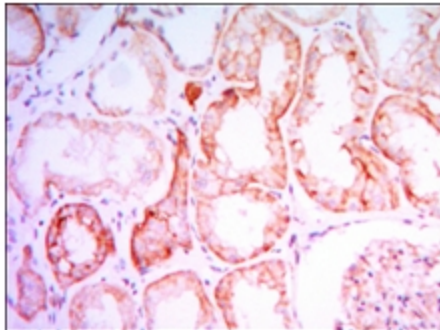
The protein encoded by this gene is a member of the G-protein coupled receptor family 2. This protein is a receptor for parathyroid hormone (PTH) and for parathyroid hormone-like hormone (PTHrLH). The activity of this receptor is mediated by G proteins which activate adenylyl cyclase and also a phosphatidylinositol-calcium second messenger system. Defects in this receptor are known to be the cause of Jansen's metaphyseal chondrodysplasia (JMC), chondrodysplasia Blomstrand type (BOCD), as well as enchondromatosis. Two transcript variants encoding the same protein have been found for this gene.

Synonyms:

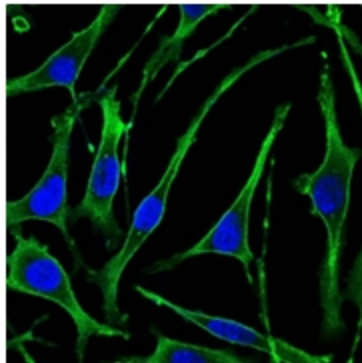
Parathyroid hormone 1 receptor, PTH/PTHrP type I receptor, PTH1R, PTHR, PTHR1

Product images:

Western blot analysis using PTH1R antibody Cat.-No AM06494SU-N against PTH1R (AA: 27-188)-hlgGfc transfected HEK293 cell lysate.



Immunohistochemical analysis of paraffin-embedded human kidney tissues using PTH1R antibody Cat.-No AM06494SU-N with DAB staining.



Immunofluorescence analysis of SK-BR-3 cells using PTH1R antibody Cat.-No AM06494SU-N (green). Blue: DRAQ5 fluorescent DNA dye.