

Product datasheet for **AM06492SU-N**

THAP11 Mouse Monoclonal Antibody [Clone ID: 3F3]

Product data:

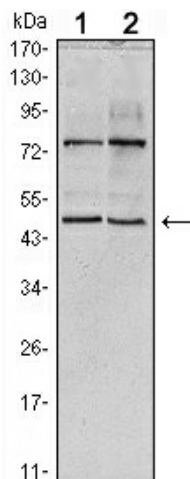
Product Type:	Primary Antibodies
Clone Name:	3F3
Applications:	ELISA, FC, IF, IHC, WB
Recommended Dilution:	Western Blot: 1/500 - 1/2000. Immunohistochemistry on paraffin sections: 1/200 - 1/1000. Immunofluorescence: 1/200 - 1/1000. Flow cytometry: 1/200 - 1/400. ELISA: 1/10000.
Reactivity:	Human
Host:	Mouse
Isotype:	IgG1
Clonality:	Monoclonal
Immunogen:	Purified recombinant fragment of human THAP11 expressed in E. Coli.
Specificity:	This antibody reacts to THAP11.
Formulation:	State: Ascites State: Ascitic fluid containing 0.03% sodium azide.
Conjugation:	Unconjugated
Storage:	Store the antibody undiluted at 2-8°C for one month or (in aliquots) at -20°C for longer. Avoid repeated freezing and thawing.
Stability:	Shelf life: one year from despatch.
Predicted Protein Size:	44 kDa
Gene Name:	THAP domain containing 11
Database Link:	Entrez Gene 57215 Human Q96EK4
Background:	The protein encoded by this gene contains a THAP domain, which is a conserved DNA-binding domain that has striking similarity to the site-specific DNA-binding domain (DBD) of Drosophila P element transposases.



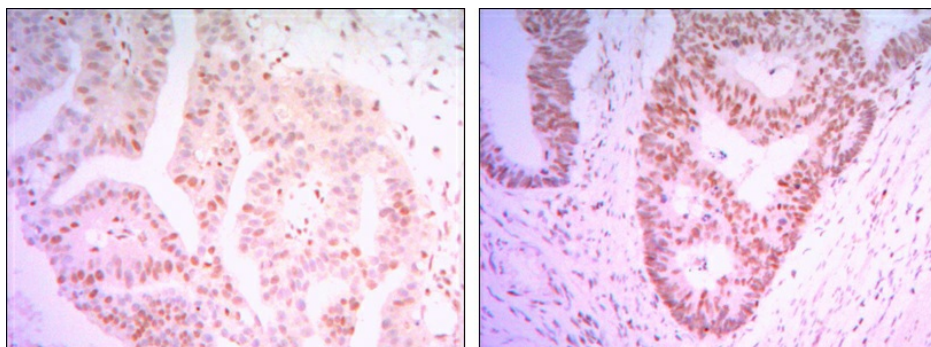
[View online »](#)

Synonyms: HRIHFB2206

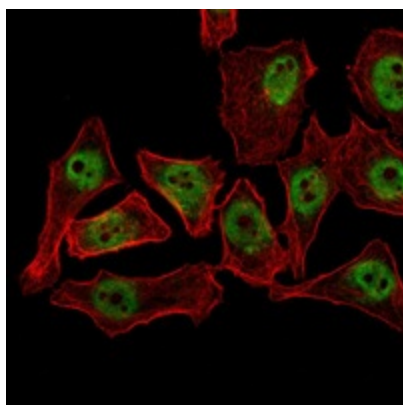
Product images:



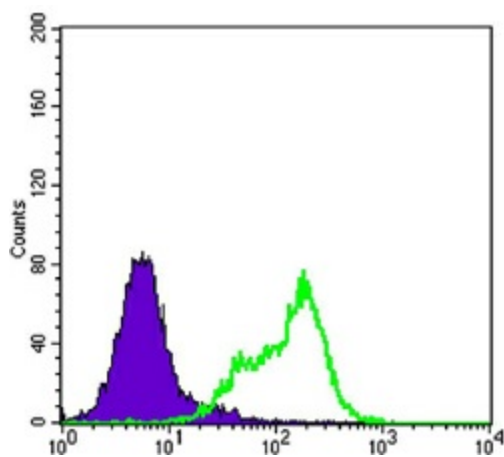
Western blot analysis using THAP11 mouse mAb against HeLa (1) and NTERA-2 (2) cell lysate.



Immunohistochemical analysis of paraffin-embedded colon cancer tissues (left) and ovary cancer tissues (right) using THAP11 mouse mAb with DAB staining.



Immunofluorescence analysis of NTERA-2 cells using THAP11 mouse mAb (green). Red: Actin filaments have been labeled with Alexa Fluor-555 phalloidin.



Flow cytometric analysis of HeLa cells using THAP11 mouse mAb (green) and negative control (purple).