

## Product datasheet for **AM06485SU-N**

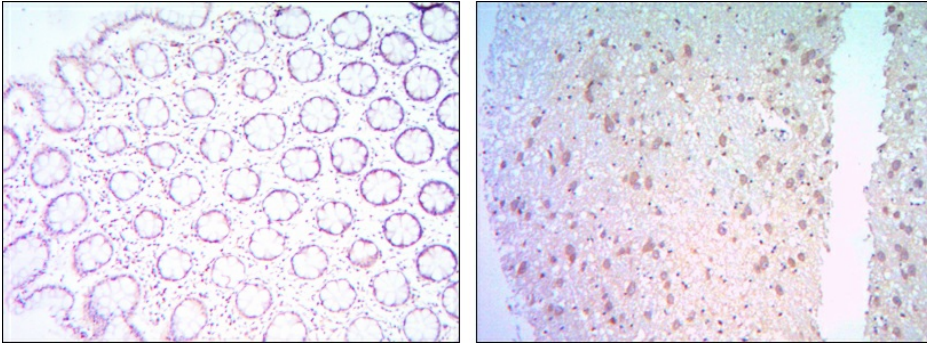
### **BCL2 Mouse Monoclonal Antibody [Clone ID: 8E12]**

#### **Product data:**

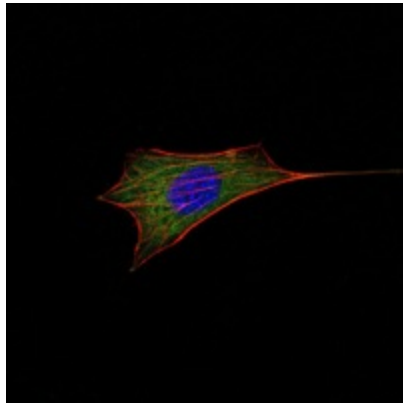
Product Type:	Primary Antibodies
Clone Name:	8E12
Applications:	ELISA, FC, IF, IHC, WB
Recommended Dilution:	<b>Immunohistochemistry on paraffin sections</b> 1/200 - 1/1000. <b>Immunofluorescence:</b> 1/200 - 1/1000. <b>Flow cytometry:</b> 1/200 - 1/400. <b>ELISA:</b> 1/10000.
Reactivity:	Human, Mouse
Host:	Mouse
Isotype:	IgG1
Clonality:	Monoclonal
Immunogen:	Synthetic peptide corresponding to residues surrounding BCL-2, conjugated to KLH.
Specificity:	This antibody reacts to BCL-2.
Formulation:	State: Ascites State: Ascitic fluid containing 0.03% sodium azide.
Conjugation:	Unconjugated
Storage:	Store the antibody undiluted at 2-8°C for one month or (in aliquots) at -20°C for longer. Avoid repeated freezing and thawing.
Stability:	Shelf life: one year from despatch.
Predicted Protein Size:	26 kDa
Gene Name:	B-cell CLL/lymphoma 2
Database Link:	<a href="#">Entrez Gene 596 Human P10415</a>
Background:	This gene encodes an integral outer mitochondrial membrane protein that blocks the apoptotic death of some cells such as lymphocytes. Constitutive expression of BCL2, such as in the case of translocation of BCL2 to Ig heavy chain locus, is thought to be the cause of follicular lymphoma. Tissue specificity: Expressed in a variety of tissues.
Synonyms:	BCL2, Bcl-2 alpha



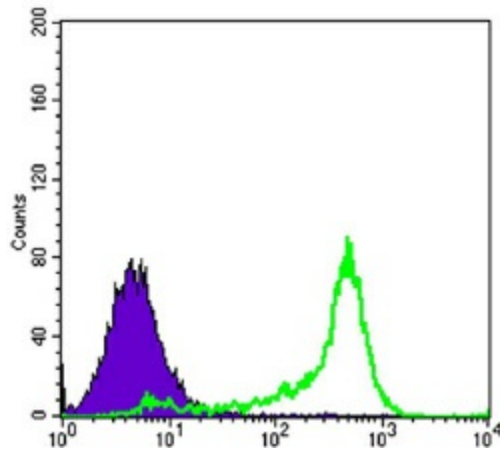
[View online »](#)

**Product images:**

Immunohistochemical analysis of paraffin-embedded colon cancer tissues (left) and human brain tissues (right) using BCL-2 mouse mAb with DAB staining.



Immunofluorescence analysis of NIH/3T3 cells using BCL-2 mouse mAb (green). Blue: DRAQ5 fluorescent DNA dye. Red: Actin filaments have been labeled with Alexa Fluor-555 phalloidin.



Flow cytometric analysis of 3T3L1 cells using BCL-2 mouse mAb (green) and negative control (purple).