

## Product datasheet for **AM06477SU-N**

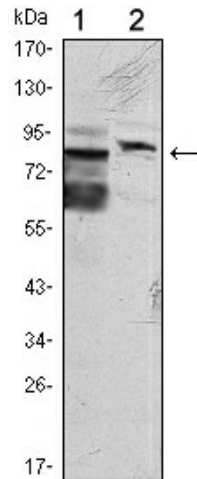
### **KLHL11 Mouse Monoclonal Antibody [Clone ID: 1B9C1]**

#### **Product data:**

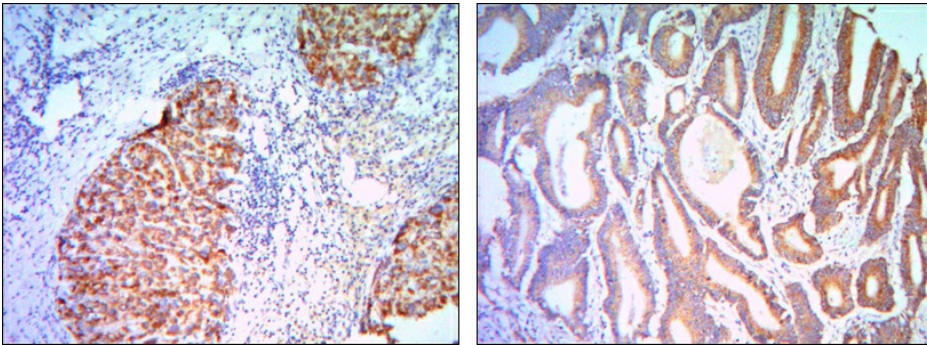
Product Type:	Primary Antibodies
Clone Name:	1B9C1
Applications:	ELISA, IF, IHC, WB
Recommended Dilution:	<b>Western Blot:</b> 1/500 - 1/2000. <b>Immunohistochemistry on paraffin sections:</b> 1/200 - 1/1000. <b>Immunofluorescence:</b> 1/200 - 1/1000. <b>ELISA:</b> 1/10000.
Reactivity:	Human
Host:	Mouse
Isotype:	IgG1
Clonality:	Monoclonal
Immunogen:	Purified recombinant fragment of human KLHL11 expressed in E. Coli.
Specificity:	This antibody reacts to KLHL11.
Formulation:	State: Ascites State: Ascitic fluid containing 0.03% sodium azide.
Conjugation:	Unconjugated
Storage:	Store the antibody undiluted at 2-8°C for one month or (in aliquots) at -20°C for longer. Avoid repeated freezing and thawing.
Stability:	Shelf life: one year from despatch.
Predicted Protein Size:	80 kDa
Gene Name:	kelch like family member 11
Database Link:	<a href="#">Entrez Gene 55175 Human Q9NVR0</a>
Background:	Kelch-like protein 11, Subcellular location Secreted.
Synonyms:	KLHL11



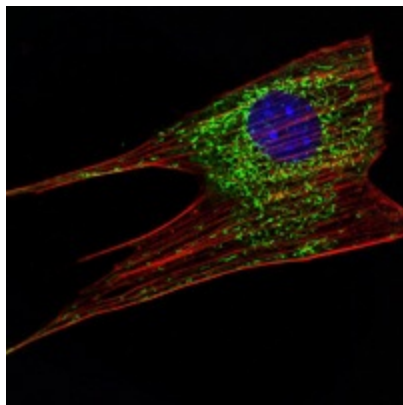
[View online »](#)

**Product images:**


Western blot analysis using KLHL11 mouse mAb against HeLa (1) and MCF-7 (2) cell lysate.



Immunohistochemical analysis of paraffin-embedded liver cancer (right) and colon cancer tissues (left) using KLHL11 mouse mAb with DAB staining.



Immunofluorescence analysis of NIH/3T3 cells using KLHL11 mouse mAb (green). Blue: DRAQ5 fluorescent DNA dye. Red: Actin filaments have been labeled with Alexa Fluor-555 phalloidin.