

Product datasheet for **AM06476SU-N**

KLHL11 Mouse Monoclonal Antibody [Clone ID: 1B9A8]

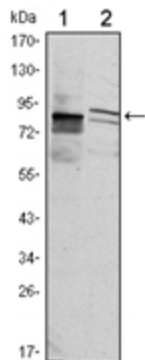
Product data:

Product Type:	Primary Antibodies
Clone Name:	1B9A8
Applications:	ELISA, FC, IF, WB
Recommended Dilution:	ELISA: 1/10000. Western Blot: 1/500 - 1/2000. Immunofluorescence: 1/200 - 1/1000. Flow Cytometry: 1/200 - 1/400.
Reactivity:	Human
Host:	Mouse
Isotype:	IgG1
Clonality:	Monoclonal
Immunogen:	Purified recombinant fragment of Human KLHL11 expressed in E. Coli.
Specificity:	This antibody recognizes KLHL11
Formulation:	State: Ascites State: Ascitic fluid containing 0.03% Sodium Azide.
Conjugation:	Unconjugated
Storage:	Store the antibody undiluted at 2-8°C for one month or (in aliquots) at -20°C for longer. Avoid repeated freezing and thawing.
Stability:	Shelf life: one year from despatch.
Predicted Protein Size:	80 kDa
Gene Name:	kelch like family member 11
Database Link:	Entrez Gene 55175 Human Q9NVR0
Background:	KLHL11 contains one BACK (BTB/Kelch associated) domain, one BTB (POZ) domain and five Kelch repeats. The function of KLHL11 remains unknown.
Synonyms:	KLHL11

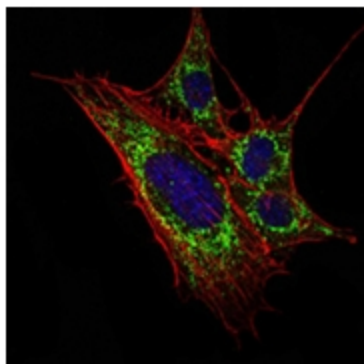


[View online »](#)

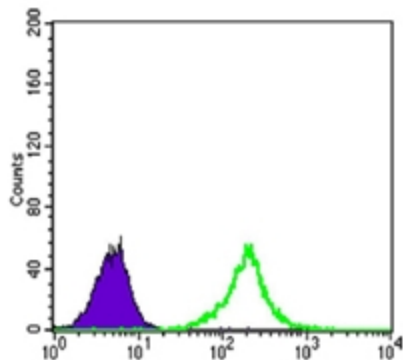
Product images:



Western blot analysis using KLHL11 antibody Cat.-No AM06476SU-N against HeLa (1) and MCF-7 (2) cell lysate.



Immunofluorescence analysis of 3T3-L1 cells using KLHL11 antibody Cat.-No AM06476SU-N (green). Blue: DRAQ5 fluorescent DNA dye. Red: Actin filaments have been labeled with Alexa Fluor-555 phalloidin.



Flow Cytometric analysis of K562 cells using KLHL11 antibody Cat.-No AM06476SU-N (green) and negative control (purple).