

Product datasheet for **AM06471SU-N**

KLHL25 Mouse Monoclonal Antibody [Clone ID: 1B7]

Product data:

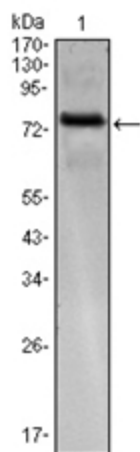
Product Type:	Primary Antibodies
Clone Name:	1B7
Applications:	ELISA, WB
Recommended Dilution:	ELISA: 1/10000. Western Blot: 1/500 - 1/2000.
Reactivity:	Human
Host:	Mouse
Isotype:	IgG2b
Clonality:	Monoclonal
Immunogen:	Purified recombinant fragment of Human KLHL25 expressed in E. Coli
Specificity:	Recognizes KLHL25
Formulation:	State: Ascites State: Ascitic fluid containing 0.03% Sodium Azide.
Conjugation:	Unconjugated
Storage:	Store the antibody undiluted at 2-8°C for one month or (in aliquots) at -20°C for longer. Avoid repeated freezing and thawing.
Stability:	Shelf life: one year from despatch.
Predicted Protein Size:	65 kDa
Database Link:	Entrez Gene 64410 Human Q9H0H3
Background:	KLHL25 (ectoderm-neural cortex protein 2, ENC2) is a cytoplasmic protein that contains six Kelch regions and a single BTB (POZ) domain. KLHL25 is highly homologous to another Kelch-like protein, ENC1, and it is believed to operate in a manner similar to other Kelch-domain containing proteins. Kelch-domain repeat containing proteins often act as modifiers of Actin fibers. Expressed early in embryogenesis, ENC1 helps to mediate neuronal process formation. It also appears to have a role in neural crest cell differentiation. KLHL25 likely functions as a substrate specific adapter for protein ubiquitinating complexes. KLHL25 is expressed in most tissues with highest expression in brain and liver.



[View online »](#)

Synonyms: KLHL25, ENC2, Ectoderm-neural cortex protein 2, ENC-2

Product images:



Western blot analysis using KLHL25 antibody Cat.-No AM06471SU-N against KLHL25 (AA: 2-230)-hlgGfc transfected HEK293 cell.